



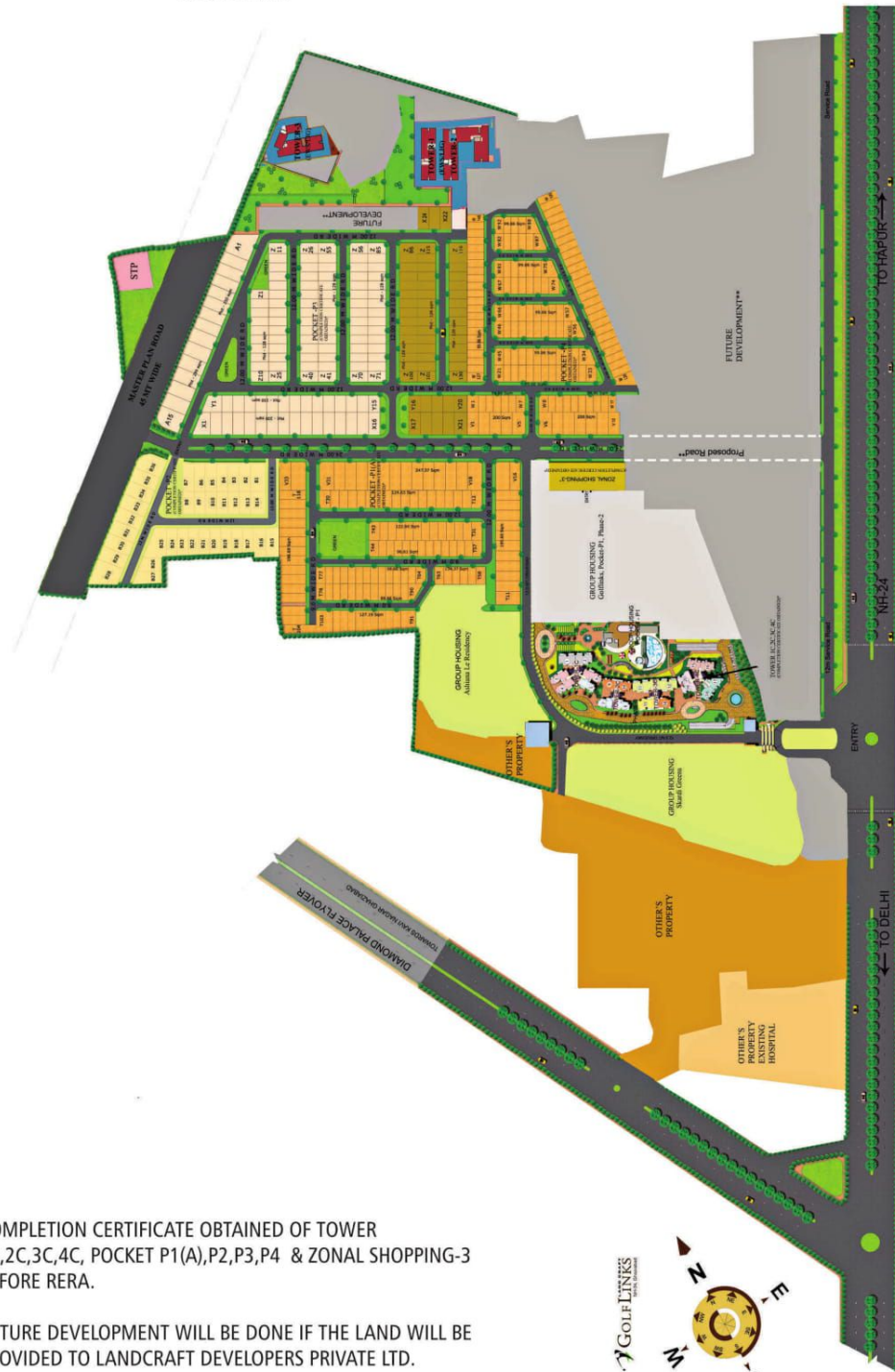
A lifestyle for
the privileged few...



GOLF LINKS

NH-24, Ghaziabad

RERA Registration Number : UPRERAPRJ5633



* COMPLETION CERTIFICATE OBTAINED OF TOWER
1C,2C,3C,4C, POCKET P1(A),P2,P3,P4 & ZONAL SHOPPING-3
BEFORE RERA.

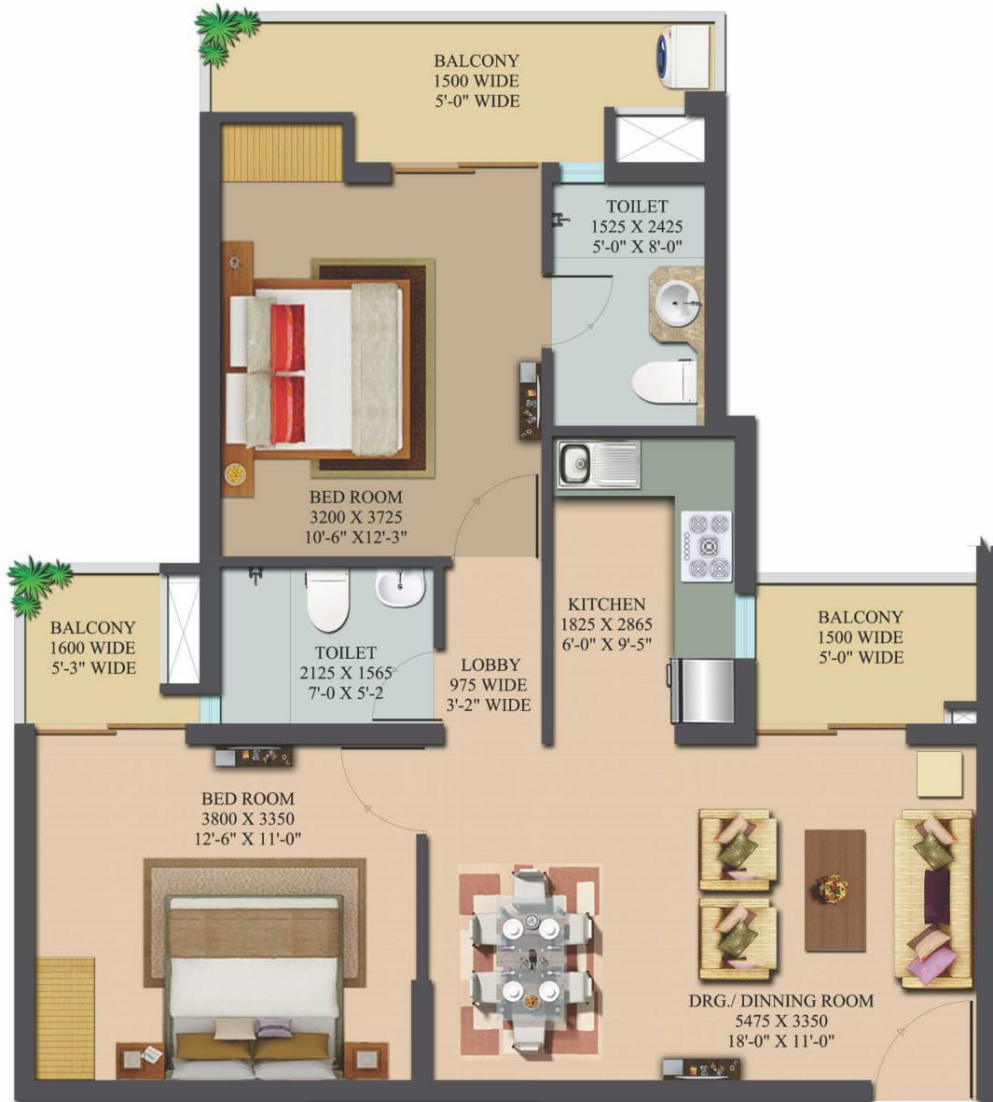
** FUTURE DEVELOPMENT WILL BE DONE IF THE LAND WILL BE
PROVIDED TO LANDCRAFT DEVELOPERS PRIVATE LTD.

**AREA STATEMENT
(PHASE - 2)**

	TYPE-1135, 2BHK + 2TOI. (638.090 SQ.FT., 59.28 Sq.m)
	TYPE-1405, 3BHK + 2TOI. (799.980 SQ.FT., 74.32 Sq.m)
	TYPE-1450, 3BHK + 2TOI. + DINNING (805.685 SQ.FT., 74.85 Sq.m)
	TYPE-1600, 3BHK + 3TOI. + DINNING + STORE (927.319 SQ.FT., 86.15 Sq.m)
	TYPE-1785, 3BHK + 3TOI. + DINNING (954.229 SQ.FT., 88.65 Sq.m)
	TYPE-2115, 3BHK + 4TOI. + STUDY + DINNING (1245.718 SQ.FT., 115.73 Sq.m)
	TYPE-2375, 4BHK + 3TOI./DRESS + DINNING (1389.632 SQ.FT., 129.10 Sq.m)



Disclaimer : The imagery used on the brochures are indicative of style only. photographs of interiors, surrounding views and location may have been digitally enhanced or altered and do not represent actual views or surrounding views. These photographs are indicative only and the layout not to scale. 1 Sqm = 10.764 Sq. ft.

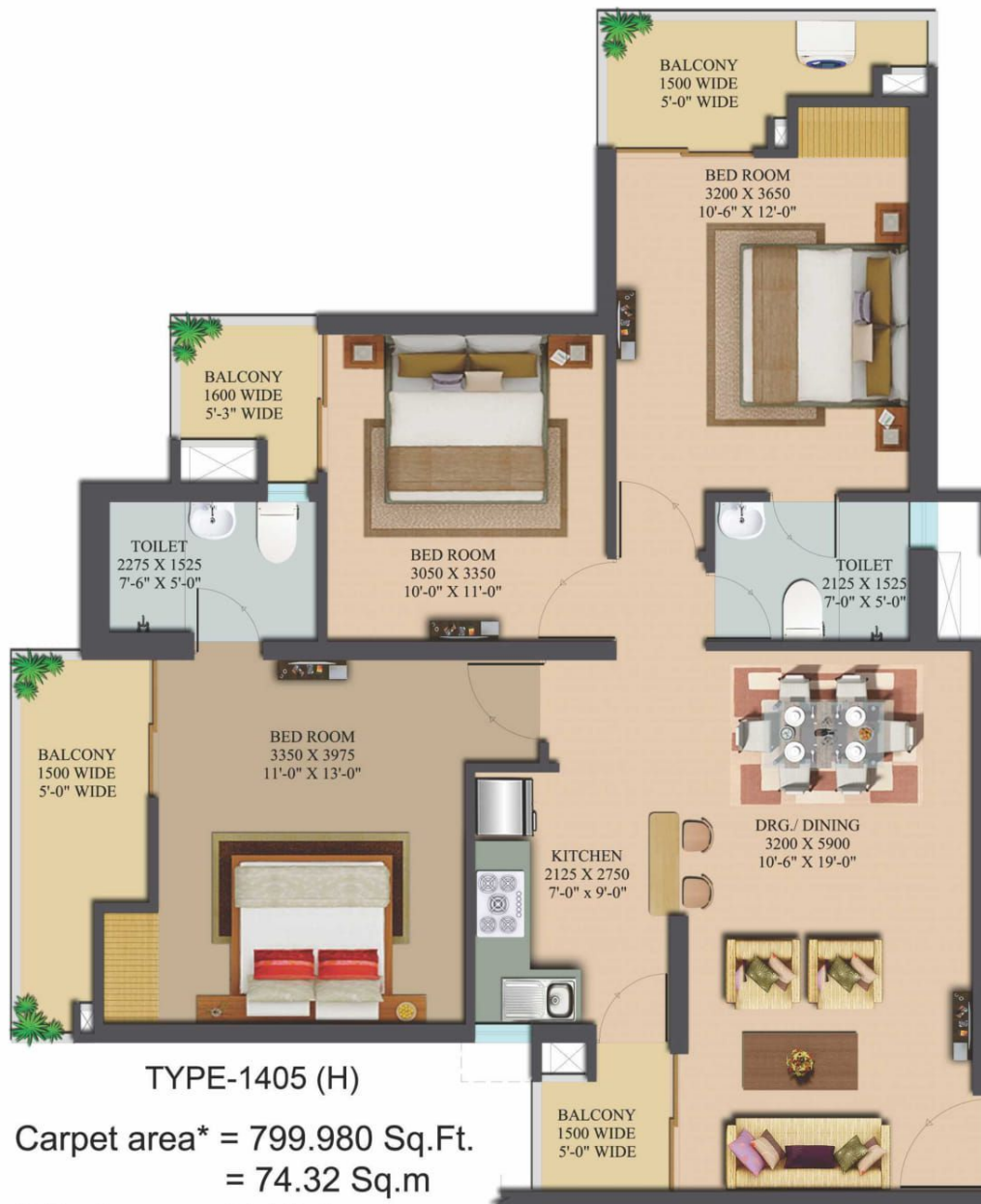


TYPE-1135 (G)

**Carpet area* = 638.090 Sq.Ft.
= 59.28 Sq.m**

2 Bedroom + 2 Toilet

*** Carpet area as defined in THE REAL ESTATE
(REGULATION AND DEVELOPMENT) ACT,2016**



TYPE-1405 (H)

**Carpet area* = 799.980 Sq.Ft.
= 74.32 Sq.m**

3 Bedroom + 2 Toilet

* Carpet area as defined in THE REAL ESTATE
(REGULATION AND DEVELOPMENT) ACT,2016



TYPE-1450 (J)

**Carpet area* = 805.685 Sq.Ft.
= 74.85 Sq.m**

3 Bedroom + 2 Toilet

*** Carpet area as defined in THE REAL ESTATE
(REGULATION AND DEVELOPMENT) ACT,2016**

Disclaimer : The imagery used on the brochures are indicative of style only. photographs of interiors, surrounding views and location may have been digitally enhanced or altered and do not represent actual views or surrounding views. These photographs are indicative only and the layout not to scale. 1 Sqm = 10.764 Sq. ft.



TYPE-1600 (K)

**Carpet area* = 927.319 Sq.Ft.
= 86.15 Sq.m**

3 Bedroom + 3 Toilet + Store

*** Carpet area as defined in THE REAL ESTATE
(REGULATION AND DEVELOPMENT) ACT, 2016**



TYPE-1785 (L)

Carpet area* = 954.229 Sq.Ft.
= 88.65 Sq.m

3 Bedroom + 3 Toilet

* Carpet area as defined in THE REAL ESTATE
(REGULATION AND DEVELOPMENT) ACT,2016



TYPE-2115 (M)

**Carpet area* = 1245.718 Sq.Ft.
= 115.73 Sq.m**

3 Bedroom + 4 Toilet + Study

*** Carpet area as defined in THE REAL ESTATE
(REGULATION AND DEVELOPMENT) ACT,2016**

GOLFLINKS



TO HAPUR
NH-24 EXPRESS WAY
FROM DELHI

WAVE CITY



COLUMBIA
ASIA
HOSPITAL
GHAZIABAD

GT Road

SECTOR 63

INDIRAPURAM

ELECTRONIC CITY, NOIDA



**AKSHAR DHAM
TEMPLE**



YAMUNA RIVER

RING ROAD

