



ABA CORP  
—greenovations—

# Cherry County



2/3/4 BHK APARTMENTS

G. NOIDA (WEST)

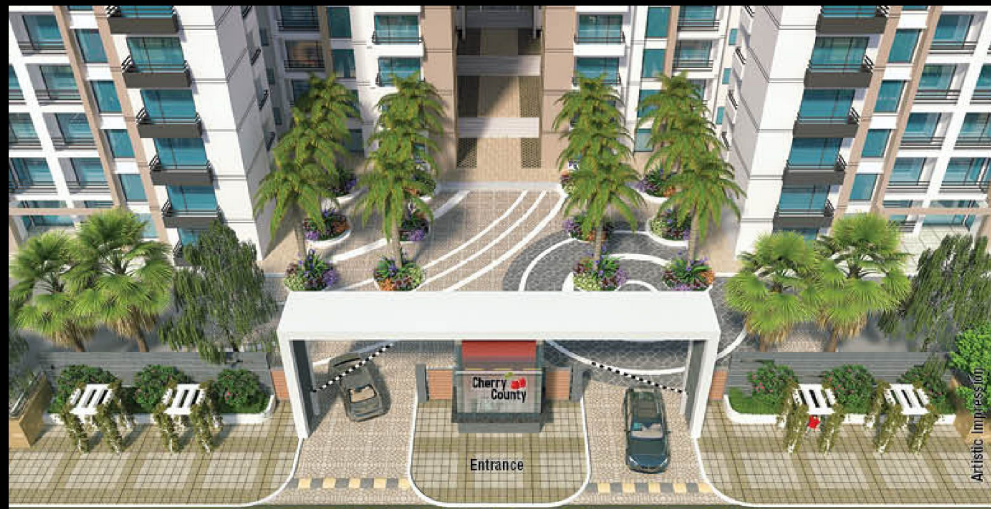
*Cheers*  
*for a good life*



**ABA CORP.**  
—greeninnovations—

Green, the colour of serenity, of life, of hope and happiness, exactly the epithets ABA Corp. stands for. We are committed to create a future that is filled with abundance and in building homes that innovatively combine environment-friendly lifestyle with latest technologies.

In the process we have not only revolutionised real estate and redefined benchmarks but have also built abodes, which fill the entire being with bliss. Committed to new concepts, new designs and new surroundings, we are proud to be one of the few names in the industry blessed with repeat customers who continue to inspire us with their trust and respect.

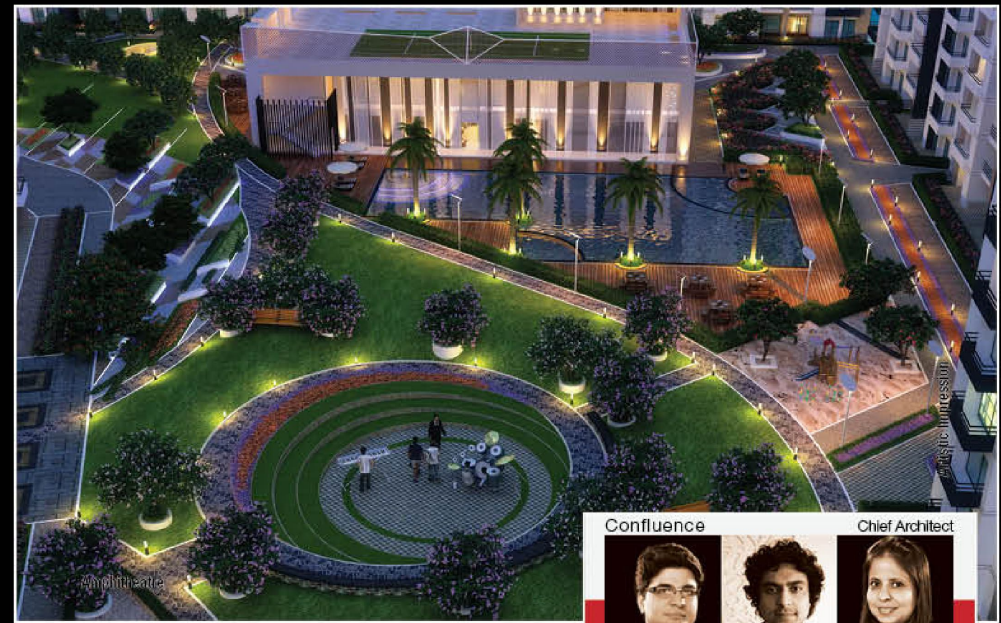


Cherry County is the culmination of long years of experience of ABA Corp. in delivering truly spellbinding homes in Delhi NCR. Spread over 12 acres, featuring 2/3/4 Bedroom Apartments, it is situated in Greater Noida (West) and heralds a lifestyle that's not only impeccable but is also many leagues apart.



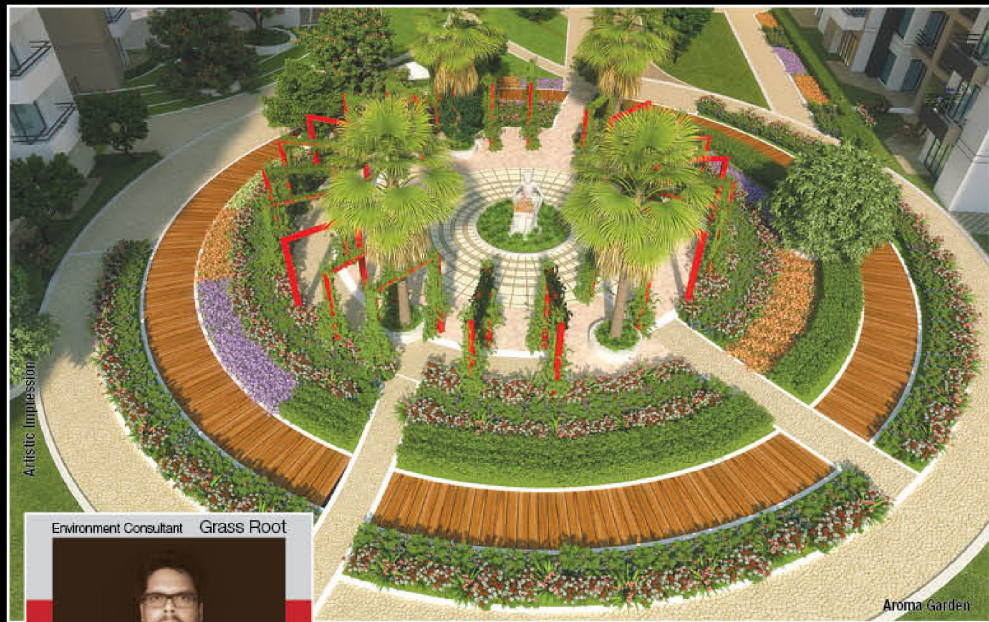
# A picture postcard lifestyle

Cherry County promises a lifestyle that is class apart. Stunning architecture, open interiors and spectacular landscaping combine together to offer within the premises residential apartments you will continue to cherish long after you have moved in.



Confluence Chief Architect

 Vihari Sharma	 Kapil Razdan	 Vireeta Singhania Sharma
--	---	---



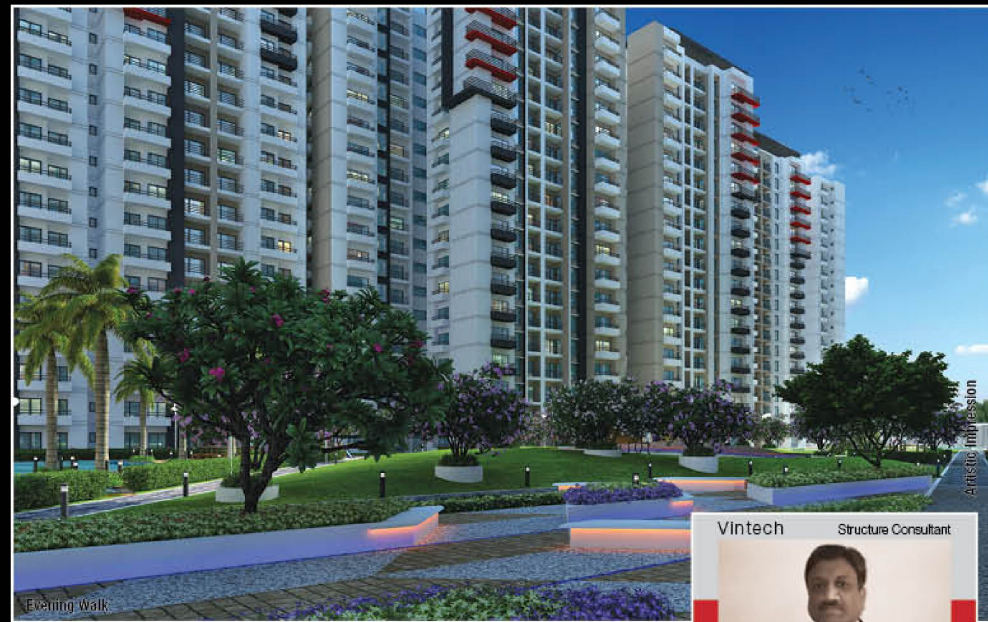
Artistic Impression

Aroma Garden

Environment Consultant Grass Root



Dr. Dheeraj Singh



Artistic Impression

Evening Walk

Vintech Structure Consultant



Dr. Vinod Jain



## Club highlights

- Swimming Pool
- Spa, Steam, Sauna, Jacuzzi
- Gymnasium
- Yoga Training
- Salon & Massage Parlour
- Lawn Tennis, Table Tennis
- Card Room & Billiard Room
- Coffee Shop, Restaurant





Zoras, London Landscape Architect

		
Arja Zaid	Sheeraz Zaid	Kanishka Sekkalingam



# Cherry County

2/2/4 BHK APARTMENTS  
G. NOIDA (WEST)

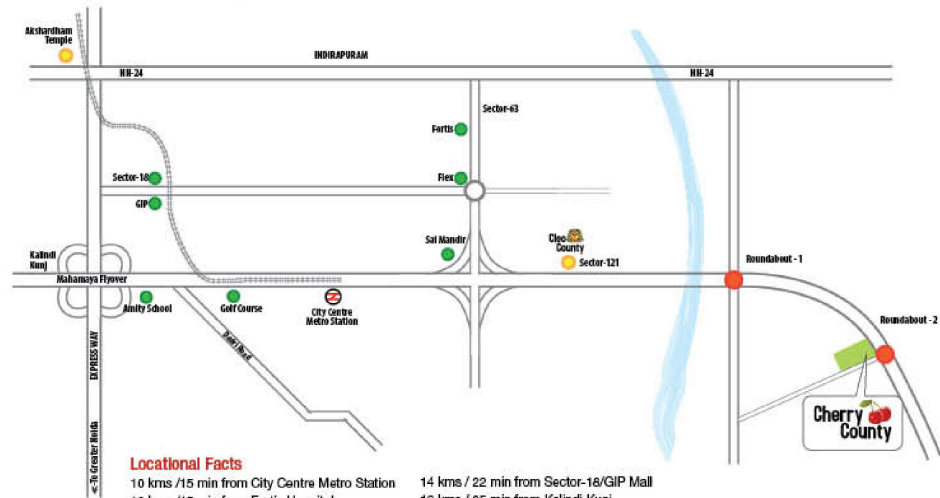
## Project Highlights

- Spread in 12 acres
- Adjacent to 130 mtr. wide road
- Corner plot facing 100 mtr. wide green belt
- Certified earthquake resistant structure
- Lifts by OTIS/KONE or equivalent
- 24 hours water supply
- 24 hours security with intercom
- Parks, Children play area
- International standard Landscaping by Zoras, London
- Only 25% covered area and 75% open space
- Rain water harvesting
- Timely possession with penalty clause
- Club with Swimming pool
- Lawn Tennis & Basketball Court
- Podium level for extra safety

Artistic Impression



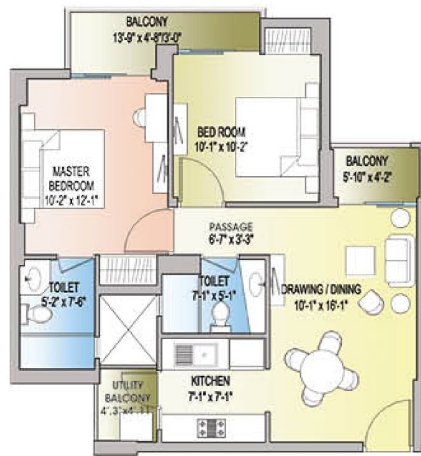
## Location Map





**2 BHK + 2T**

Saleable Area - 801 Sq. Ft.  
Built-up Area - 746 sq. ft.

**3 BHK + 2T**

Saleable Area - 1206 Sq. Ft.  
Built-up Area - 964 Sq. Ft.

**3 BHK + 3T**

Saleable Area - 1521 Sq. Ft.  
Built-up Area - 1216 Sq. Ft.

**3 BHK + 3T + SER.**

Saleable Area - 1620 Sq. Ft.  
Built-up Area - 1302 Sq. Ft.



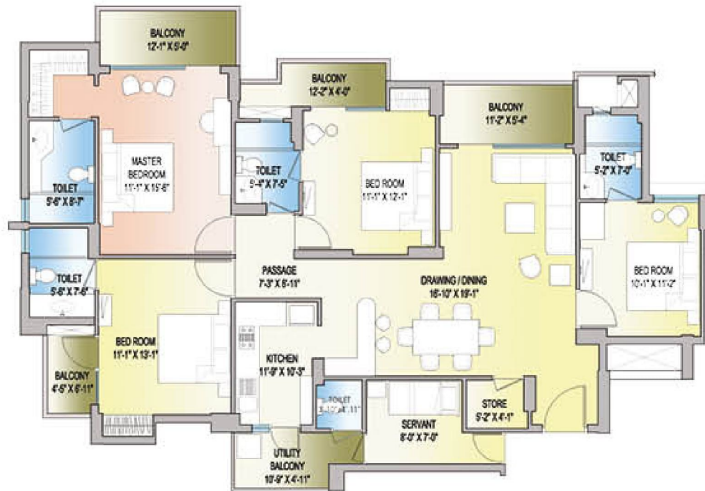
Disclaimer : While every attempt has been made to ensure the accuracy of the plans shown, all measurements, positioning, fixtures, fittings and any other data shown are an approximate interpretation for illustrative purposes only and we are not to scale. No responsibility is taken for any error, omission, mis-statement or use of data shown. The company reserves the right to make changes in the plans, specifications, dimensions and elevations without any prior notice. 1 sq. ft. - 1.1020 sq. mt., 1 sq. mt. - 10.764 sq. ft., 1 ft. - 0.305 mt and 1 mt - 3.281 ft.

Disclaimer : While every attempt has been made to ensure the accuracy of the plans shown, all measurements, positioning, fixtures, fittings and any other data shown are an approximate interpretation for illustrative purposes only and we are not to scale. No responsibility is taken for any error, omission, mis-statement or use of data shown. The company reserves the right to make changes in the plans, specifications, dimensions and elevations without any prior notice. 1 sq. ft. - 1.1020 sq. mt., 1 sq. mt. - 10.764 sq. ft., 1 ft. - 0.305 mt and 1 mt - 3.281 ft.

## 4 BHK + 4T + SER

Saleable Area - 2232 Sq. Ft.

Built-up Area - 1778 Sq. Ft.



Disclaimer : While every attempt has been made to ensure the accuracy of the plans shown, all measurements, positioning, fixtures, fittings and any other data shown are an approximate interpretation for illustrative purposes only and are not to scale. No responsibility is taken for any error, omission, mis-statement or use of data shown. The company reserves the right to make changes in the plans, specifications, dimensions and elevations without any prior notice. 1 sq. Ft. = 1.19629 sq. mt., 1 sq. mt. = 10.764 sq. Ft., 1 Ft. = 0.305 mt and 1 mt = 3.281 Ft.

## Specifications

### Living & Dining Area

- Main entry door frame of Maranti or equivalent wood with skin moulded door shutter
- Finished walls & ceiling with OBD in pleasing shades
- 2'x2' Vitrified tiles flooring
- One land line connection having intercom facilities
- Provision for DTH connection

### Bedrooms

- Wooden laminated flooring in Master Bedroom
- 2'x2' Vitrified tiles flooring in other Bedrooms
- Finished walls & ceiling with OBD in pleasing shades
- Internal door-frames of Maranti or equivalent wood
- Internal door made of painted flush shutters

### Kitchen

- Granite working top with stainless steel sink
- Designer ceramic tiles upto 2' above working counter
- Finished walls & ceiling with OBD in pleasing shades
- Individual RO unit for drinking water
- Vitrified tile flooring 2'x2'

### Toilets

- Ceramic tiles on walls up to door level
- Anti-skid ceramic tiles flooring
- White sanitary ware with EWC, CP fittings and mirror in all the toilets

## Our built-up heritage

Inspired by ancient Roman architecture, The Caracalla Club, at Orange County, has been talk of the town. What makes it unique is, that the entire structure is inverted. It is the first upside down building in India.

Spread over ten acres of land with 900 apartments Orange County has the reputation of being the most elite and prestigious residential complex in this part of NCR. There are currently 800 families residing in the campus.



G.N. Hostel, Greater Noida



Neelamber, Kaushambi



The Caracalla Club

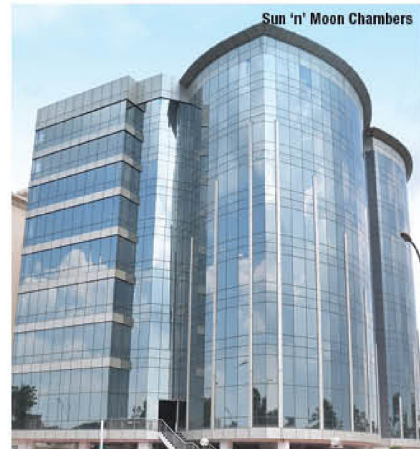


Actual photographs

Spread over 12 acres of land with 900 apartments Olive County has been offered for possession from November 2011. It boasts of the cosiest and the most comfortable homes, blended with the value of brand and yet again it is the most elite and prestigious residential complex in Vasundhara.



## Completed projects in Jaipur



Actual photographs



# ABA CORP.

— greenovations —

Off. Office: A-39, SECTOR-63, NOIDA, U.P.  
Site Office: GH-5B, TOWER-4, GREATER NOIDA, U.P.

A member of  
**CREDAI**

Disclaimer : While every attempt has been made to ensure the accuracy of the plans shown, all measurements, positioning, fixtures, fittings and any other data shown are an approximate interpretation for illustrative purposes only and are not to scale. No responsibility is taken for any error, omission, mis-statement or use of data shown. The company reserves the right to make changes in the plans, specifications, dimensions and elevations without any prior notice. 1 sq. ft. = 0.0929 sq. mt., 1 sq. mt. = 10.764 sq. ft., 1 ft. = 0.305 mt and 1 mt = 3.281 ft.

© 2013, All rights reserved. Images, content, layout or design may not be reproduced in any manner or media without the specific written permission of ABA CORP.

FOLLOW US ON:  [WWW.FACEBOOK.COM/ABACORP](http://WWW.FACEBOOK.COM/ABACORP)  [WWW.TWITTER.COM/ABA\\_CORP](http://WWW.TWITTER.COM/ABA_CORP)