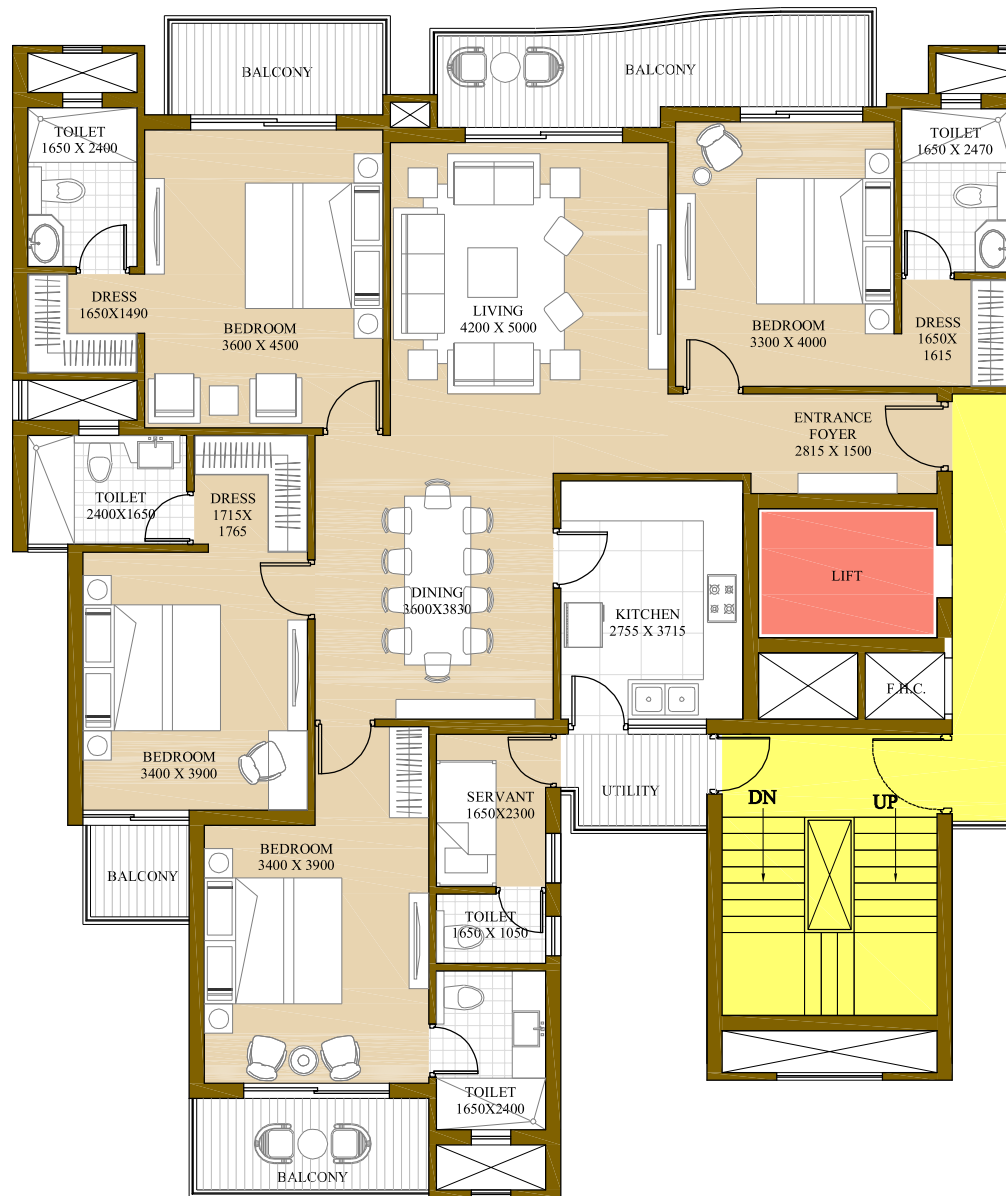


Super Area = 2400 Sq. Ft.

#2001 Sq. Ft. (Built-up Area) + 399 Sq. Ft. (Common Circulation + Services)

Carpet Area - 1568 Sq. Ft.



KEY PLAN

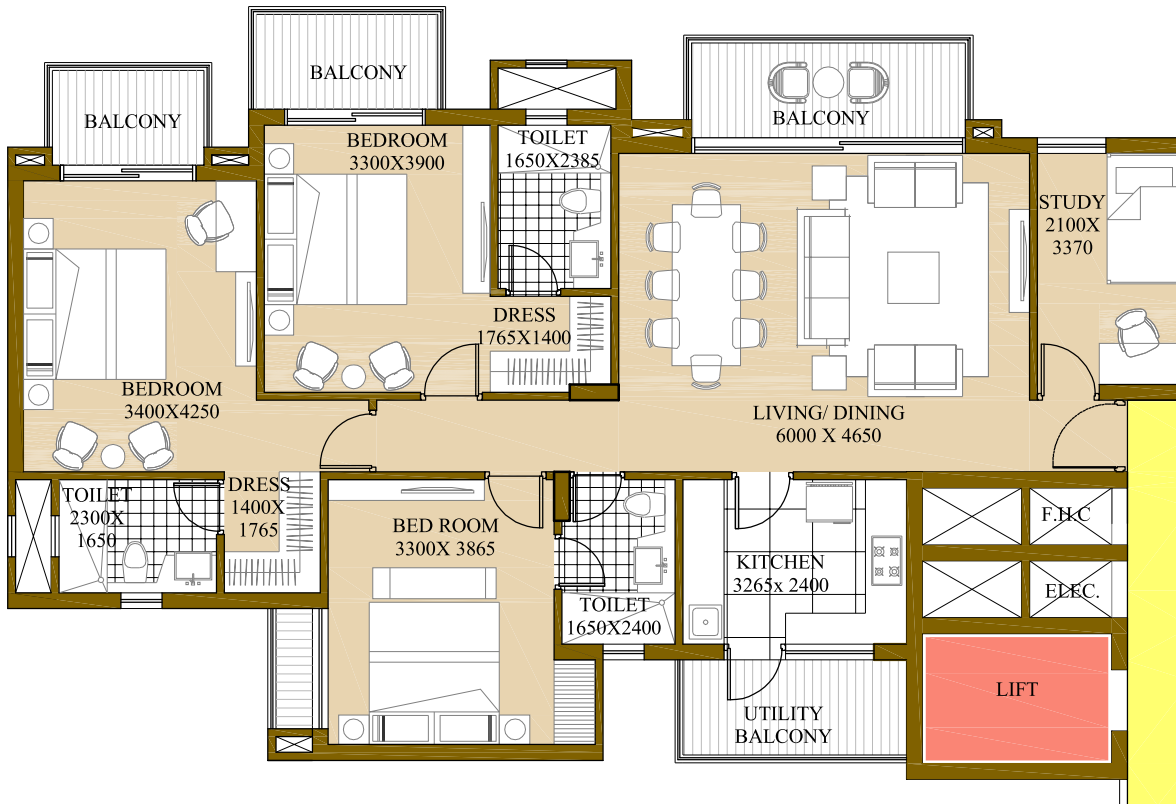
NOTE:

1. The window size/its location in rooms may change because of elevational features.
2. The overall layout may vary because of statutory reasons in case required.
3. Currently, no columns are shown in the plan which will be incorporated as per structure.
4. Layout shown is for illustration purposes, for specific unit floor plan please contact sales team.

Super Area= 1800 Sq. Ft.

#1540 Sq. Ft. (Built-up Area) + 260 Sq. Ft. (Common Circulation + Services)

Carpet Area - 1205 Sq. Ft.



KEY PLAN

NOTE:

1. The window size/its location in rooms may change because of elevational features.
2. The overall layout may vary because of statutory reasons in case required.
3. Currently, no columns are shown in the plan which will be incorporated as per structure.
4. Layout shown is for illustration purposes, for specific unit floor plan please contact sales team.