

Exclusive  
Marketing Partner



*Bringing Clarity  
into Real Estate*



**HABITECH**  
Infrastructure Ltd.



HABITECH  
**CRYSTAL**  
Fully Furnished Office & Retail Space

Knowledge Park - 3  
Greater Noida

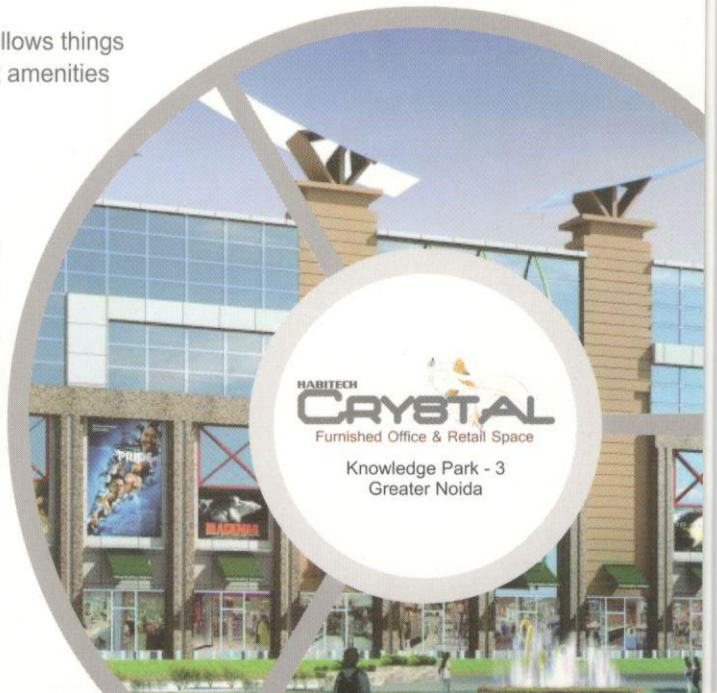
LIVE. WORK. SHOP. PLAY.

## Habitech Crystal - Greater Noida

Habitech extends the concept of IT & Software Technology Park further to a happy life constituting family and fun.

Habitech Crystal offers a plug and play environment which allows things for granted - a failsafe physical infrastructure, highly efficient amenities and facilities - right in the heart of the world city.

The city is fast emerging as new IT, STP & Industrial Hub and some of the global brands have already parked themselves in sizeable presence. Habitech Crystal offers the most technologically advanced work, shop, stay and play concept connecting you to peace and pace while living in 5 lac sq. ft of area with infrastructure of international standards.



HABITECH  
**CRYSTAL**  
Furnished Office & Retail Space

Knowledge Park - 3  
Greater Noida

## Pleasure is the key

Habitech Crystal gives you the world class environment to live, work, shop and play. It also practices the theory of flat world that makes global leaders and brands stand next to each other as neighbors. At Habitech Crystal you will share the cult of world leaders.

## Key Highlights

- A well planned destination of entire NCR
- An Eco - Friendly Commercial Destination
- Provision of State - of - The - Art - Technology
- Flexi Size Business Suites
- 3 Star Hotel & Multiplex
- Facility of Multi Access IT Support
- Round the Clock Management Service
- 100% Power Back-up, Mail Delivery / Postal Services
- Low Common Area Maintenance Charges
- Dedicated Retail Space along with sit out Cafeteria, Food Court & Eat out Zone.
- Gaming Zone
- GYM

TOTAL AREA  
6,80,000 sq.ft. (Approx.)

WATER PARK (Operational)

Smart IT Offices Space  
(Operational)  
2,00,000 /-

RETAIL SPACE  
1,00,000 sq.ft.

STUDIO APARTMENTS  
1,00,000 sq.ft.  
(Operational)

SMART OFFICE SPACE  
60,000 sq.ft.  
AREA IN (5th to 10th FLOOR)

Small IT OFFICES  
1,80,000 sq.ft.

LIVE. WORK. SHOP. PLAY.

## CRYSTAL MALL

The local shopping hub at Crystal Mall is planned in a shopper-friendly way to make shopping a fun and enjoyable affair for shoppers.

The Complex will have a shop for every need. It will have among other things shops for food items, household materials, apparels, restaurants, kid's corners, departmental stores and utility centers.

The place is easily accessible from all directions. With its smartly managed ample parking spaces, coming to the commercial hub will always be a pleasant experience. With something for everyone, this place will serve as a great place to hang out for your family.

CRYSTAL MALL

12%  
ASSURED  
RETURN



Crystal **36**

PART - 2

**9% / 12%**  
Assured Scheme  
for 36 Months

**Super Area**  
250 sq.ft.  
**Carpet Area**  
160 sq.ft.

**IT Offices**

Crystal **36**  
PART - 2

## KEY AMENITIES

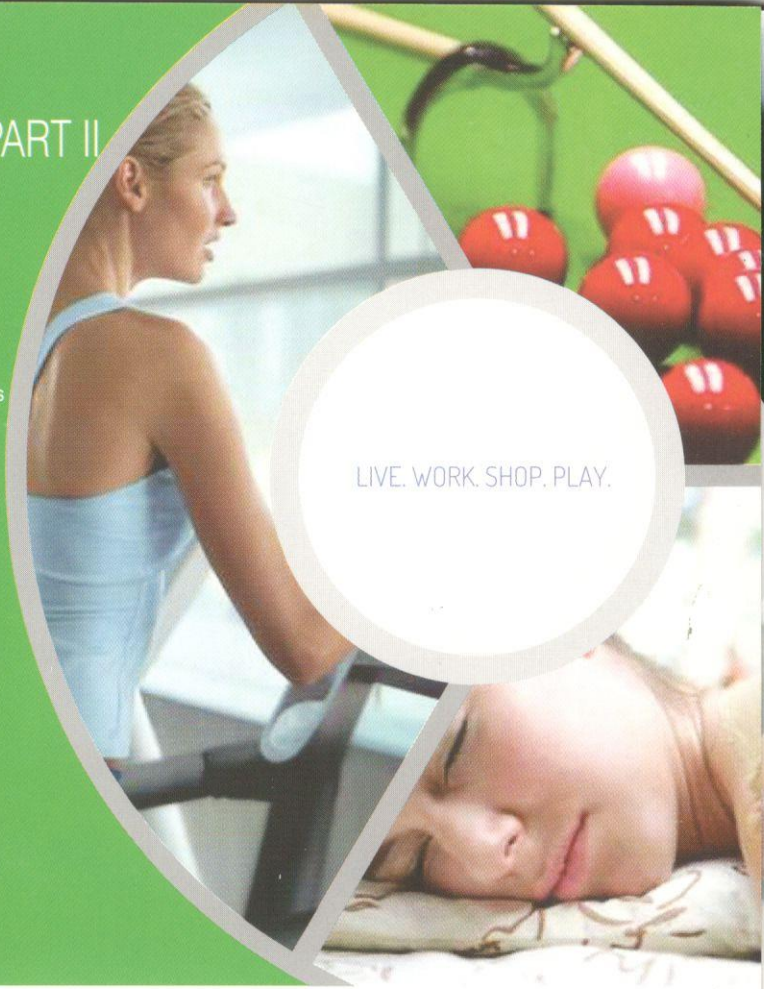
- 100% Power backup
- Club house & swimming pool, water park, gym and shopping mall
- Full utilization of space with wisely built Conference rooms, Board rooms & Reception
- Modern Cafeteria, Club & Gym Facility
- Eco-friendly office with active Waste Management
- Landscaped Lawns & Terrace Garden
- Sitting and Structure Design Efficiency
- Energy & Water Efficiency
- 3 Tier Security System
- Earthquake Resistant Structures

## FURNISHING DETAILS

- Air Conditioning
- False Ceiling
- Lift
- Electric Fitting / Lighting
- Tile Flooring
- Ladies & Gents Toilet on Each Floor
- Wall Paint
- Glass Door

## KEY HIGHLIGHTS OF CRYSTAL PART II

- Ground is completely dedicated to Shopping & retail hub
- Vaastu abiding structures
- Clear visibility from all directions
- Serving the need for at least 1,00,000 people living in nearby locations
- Provision of cafeteria and food plaza
- Facility of Kiosk / Bank / Crèche
- Security pavilion pedestrian entrance



LIVE. WORK. SHOP. PLAY.

## LOCATION ADVANTAGE

**NEIGHBORS PRIDE** - Wipro, NIIT Technology, Moser Baer, ST Micro Electronics, LG, Videocon, Honda Siel, New Holland Tractors, Escorts Yamaha, Denso India, Delphi, Asian Paints.

**YAMUNA EXPRESSWAY** - It is a six-lane highway connects 160 kilometer distance between Greater Noida and Agra.

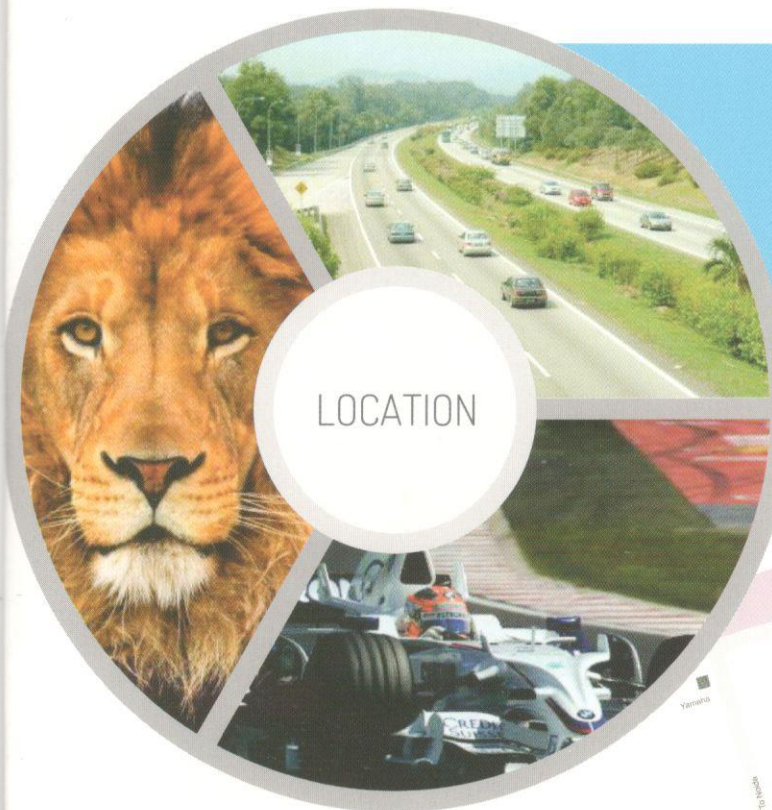
**NIGHT SAFARI** - It is planned to have a unique concept where visitors can view the animals at night in the open wilderness.

**Gautam Budh University** - It is one of the biggest university of Asia.

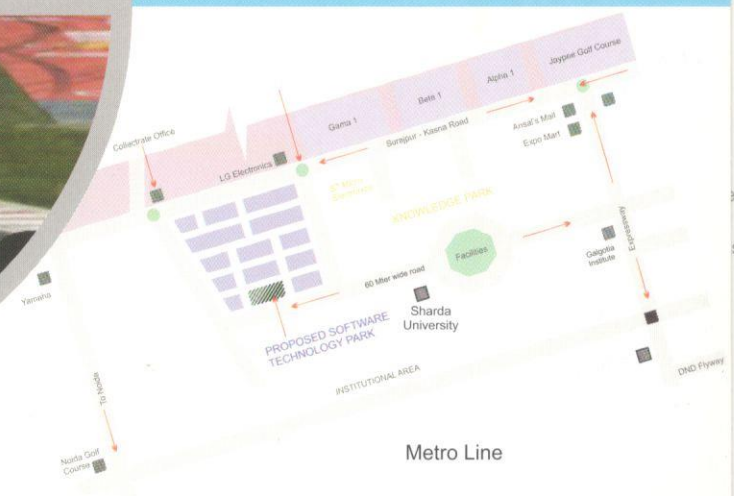
**International Cricket Stadium & Car Race Circuit**

**EDUCATION HUB** : KP 3 have already seen 5 major universities and there are few more in the pipeline to come

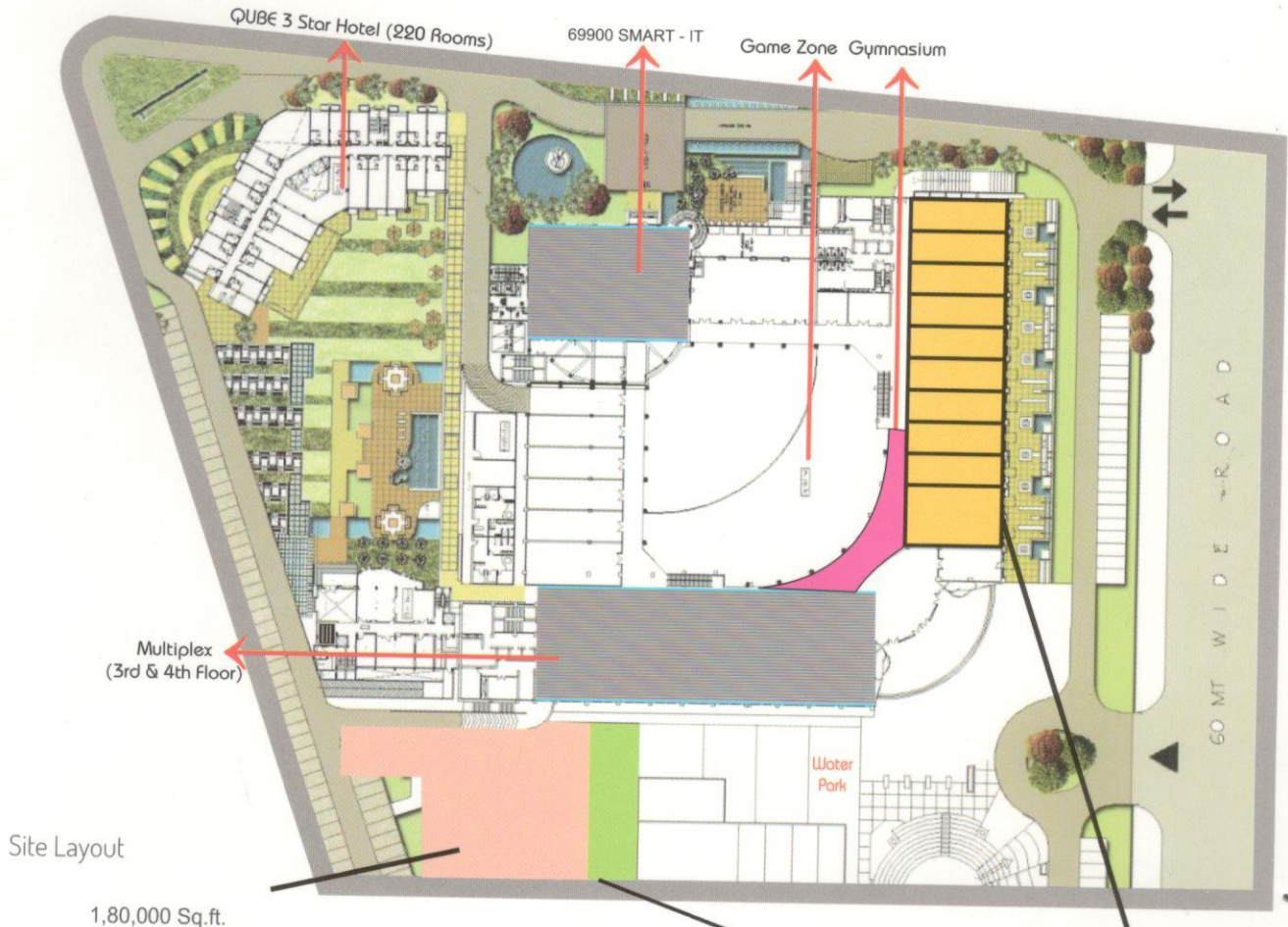
**STUDIO APARTMENT IN THE CLOSE VICINITY** : THE QUEBEC



LOCATION

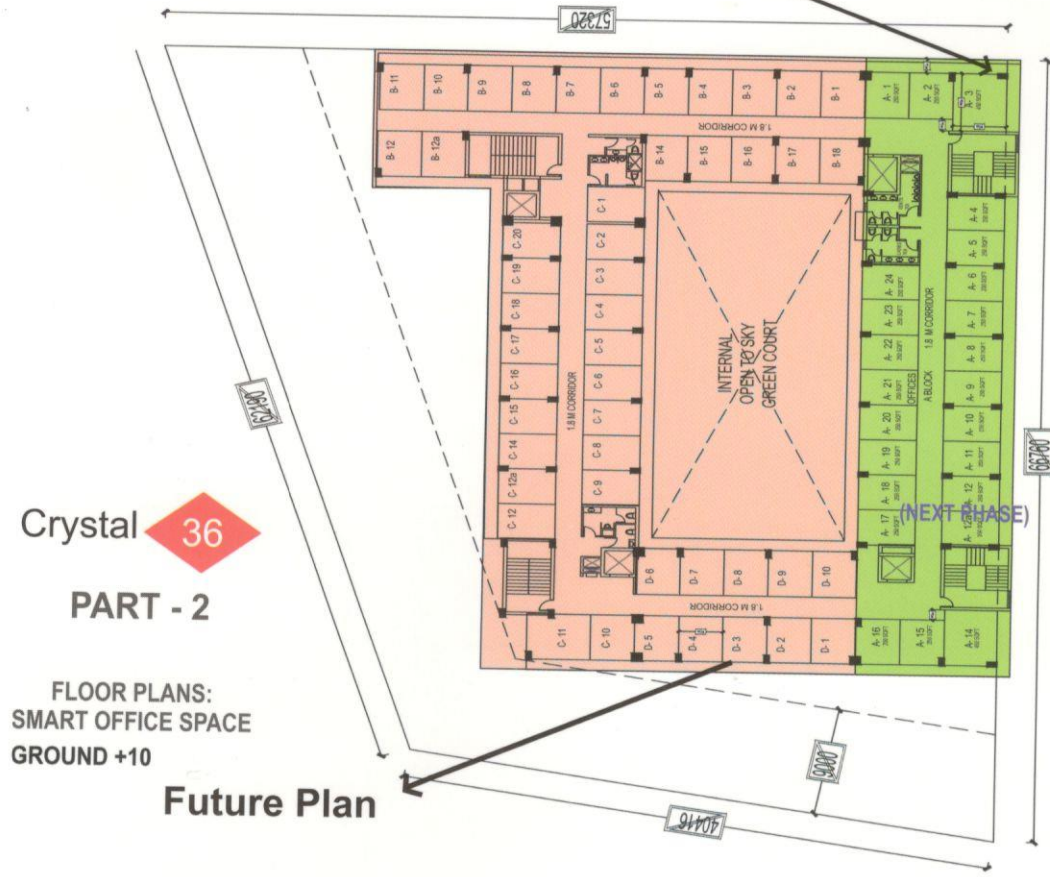


Metro Line



Site Layout

1,80,000 Sq.ft.



- Restaurant
- US Dollar Store
- Café Coffee Day a LOT can happen over coffee
- LC
- DOFA PIZZA THE WORLD'S MOST FRIENDLY PIZZA
- Mumbai Spices
- & More....

# VISION CREATES A POSITIVE DISTINCTION

We take pride and are yet humbled in being one of the foremost real estate company and take pleasure for representing the most up market assets. Whether commercial or residential we acknowledge the customer's requirement and serve them with state of the art excellence.

Our mission at Habitech Infrastructure Ltd. is to work under necessities such as, Strategic Location, Stylish Design, Convenience, Class with Vastu, Idyllic Surroundings and affordable rates with strict observance to the legal aspects.

## SOME OF OUR KEY PROJECTS

Delhi Technical Campus, Greater Noida

Mayoor International School, Expressway, Greater Noida

Grand Heritage Resort, Greater Noida

Habitech Panchtatva, Noida Ext.

Qube Studio, Greater Noida



**HABITECH**  
Infrastructure Ltd.

RERA REGISTRATION : UPRERAPRJ14395

**Site Address:**

Plot No. 9, Knowledge Park - 3,  
Greater Noida, U.P.

**Corporate Office:**

Habitech Infrastructure Ltd.  
C-26, Sector-3, Noida, U.P.  
Phone : 0120 410 9999  
[www.habitechinfrastructure.co.in](http://www.habitechinfrastructure.co.in)

**Exclusive Marketing Partner**



**ACRES N INCHES PVT. LTD.**

RERA REGISTRATION : UPRERAAGT10739

**Corp. Off.:** C-26, 1st & 2nd Floor, Sec.-3, Noida, U.P.

Phone : 0120 - 4101111

Email: [customersupport@acresninches.com](mailto:customersupport@acresninches.com)

**Head Off.:** B-6, 1st Floor, Sec.-4, Noida, U.P.

Phone : 0120 - 4101111

Email: [customersupport@acresninches.com](mailto:customersupport@acresninches.com)