





ARCHITECT : HAFEEZ CONTRACTOR

RENDERCAD.COM



ARCHITECT : HAFEEZ CONTRACTOR

RENDERCAD.COM



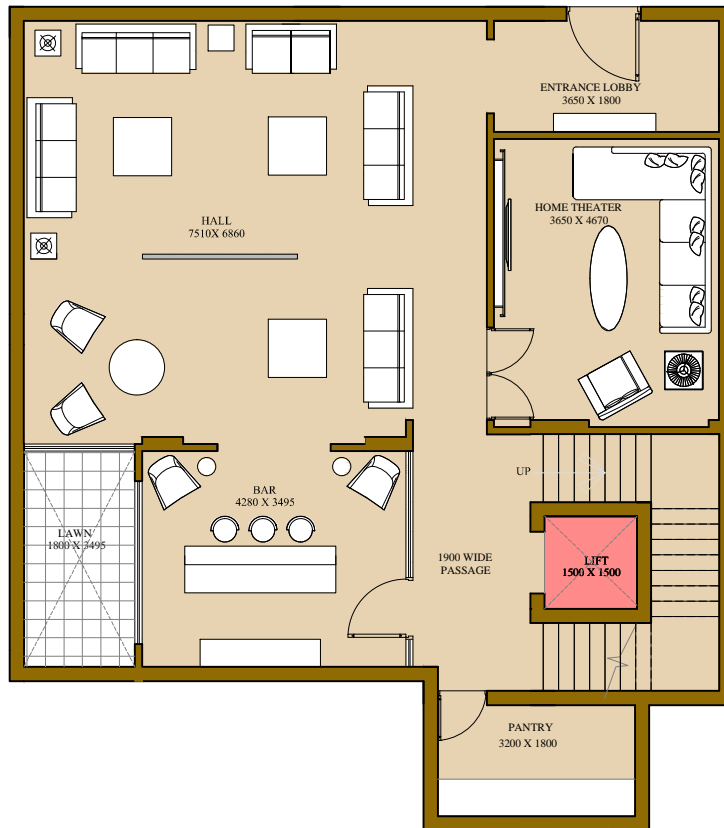
ATS

SECTOR-150 NOIDA

MASTER LAYOUT PLAN

Architect
Hafeez
Contractor
MUNBAI

350 SQ YARD VILLA NO TYPE 1 BASEMENT PLAN



BASEMENT

ROW HOUSE 350 sq.yds.
TYPE -1

VILLA NO (1-09,16-29,56-58 & R1)

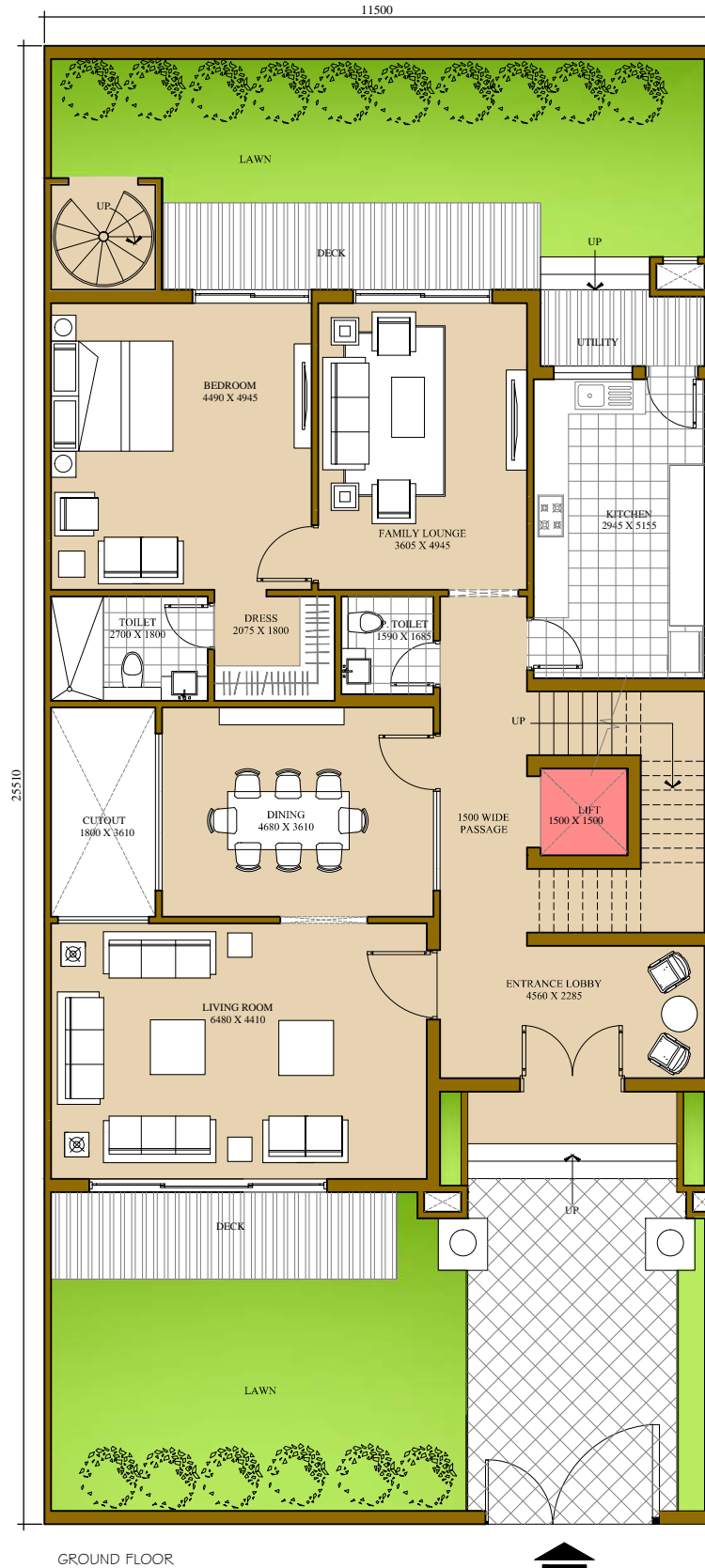
NOTE:

1. THE WINDOW SIZE/ ITS LOCATION IN ROOMS MAY CHANGE BECAUSE OF ELEVATIONAL FEATURES
2. THE OVERALL LAYOUT MAY VARY BECAUSE OF STATUTORY REASONS IN CASE REQUIRED
3. THE SUPER AREA MAY VARY BY ± 10%
4. CURRENTLY NO COLUMNS ARE SHOWN IN THE PLAN WHICH WILL BE INCORPORATED AS/ STRUCTURE
5. WHILE CONVERTING MILLIMETERS(MM) TO FEET-INCHES, INCHES ARE ROUNDED OFF TO NEAREST POSSIBLE WHOLE NUMBER FOR EASE OF CALCULATIONS.

1 SQ.MTRS = 10.764 SQ. FT.

ATS PRISTINE GOLF VILLAS

350 SQ YDS VILLA TYPE - 1 GROUND FLOOR



ROW HOUSE 350 sq.yds.
TYPE -1

VILLA NO (1-09,16-29,56-58 & R1)

Super Area=5750 Sq Ft
Garden Area= 1087 Sq Ft

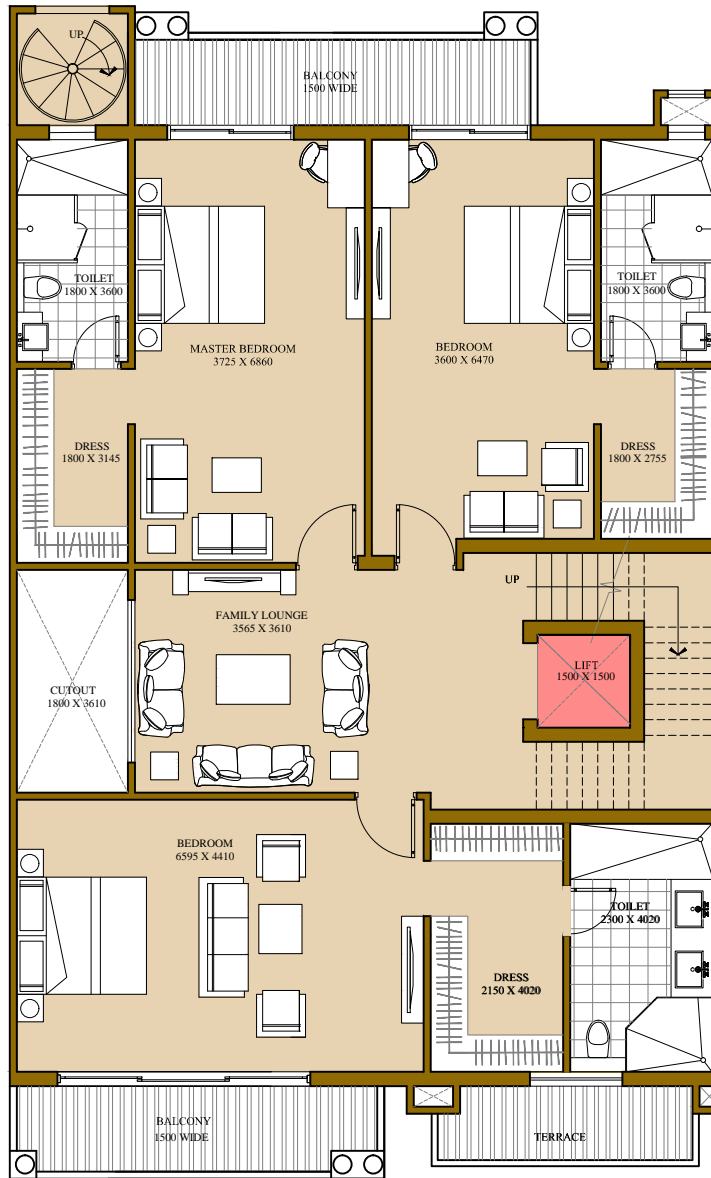
NOTE:

1. THE WINDOW SIZE/ ITS LOCATION IN ROOMS MAY CHANGE BECAUSE OF ELEVATIONAL FEATURES
2. THE OVERALL LAYOUT MAY VARY BECAUSE OF STATUTORY REASONS IN CASE REQUIRED
3. THE SUPER AREA MAY VARY BY $\pm 10\%$
4. CURRENTLY NO COLUMNS ARE SHOWN IN THE PLAN WHICH WILL BE INCORPORATED AS/ STRUCTURE
5. WHILE CONVERTING MILLIMETERS(MM) TO FEET-INCHES, INCHES ARE ROUNDED OFF TO NEAREST POSSIBLE WHOLE NUMBER FOR EASE OF CALCULATIONS.

1 SQ.MTRS = 10.764 SQ. FT.

ATS PRISTINE GOLF VILLAS

350 SQ YDS VILLA TYPE - 1 FIRST FLOOR PLAN



FIRST FLOOR

ROW HOUSE 350 sq.yds.
TYPE -1

VILLA NO (1-09,16-29,56-58 & R1)

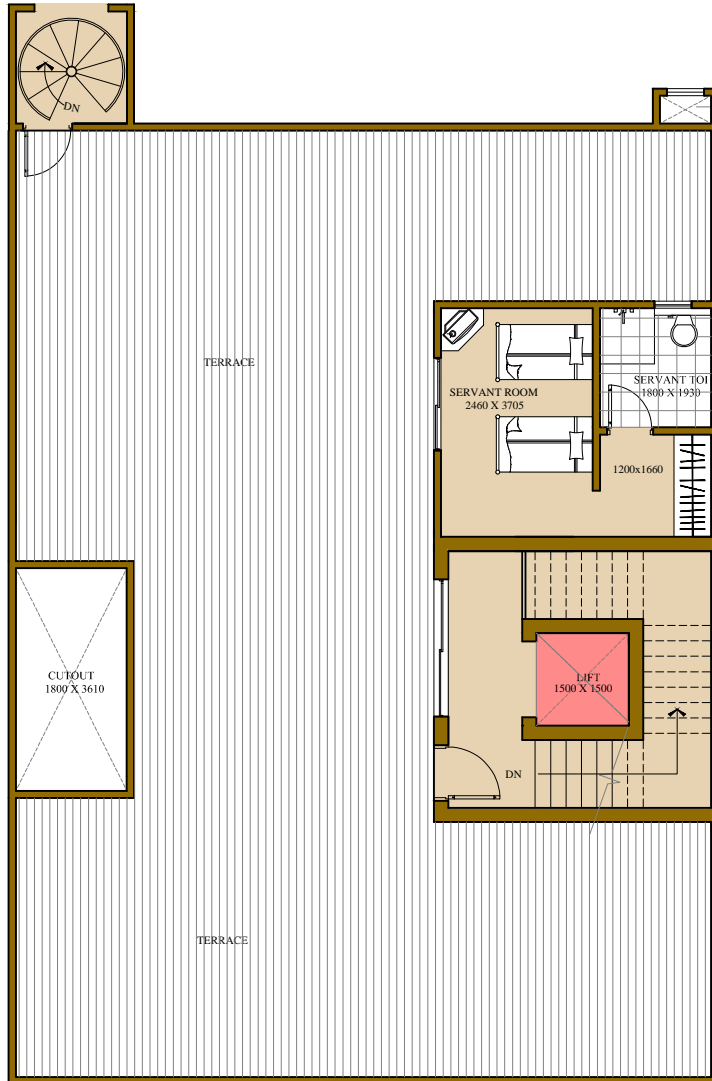
NOTE:

1. THE WINDOW SIZE/ ITS LOCATION IN ROOMS MAY CHANGE BECAUSE OF ELEVATIONAL FEATURES
2. THE OVERALL LAYOUT MAY VARY BECAUSE OF STATUTORY REASONS IN CASE REQUIRED
3. THE SUPER AREA MAY VARY BY $\pm 10\%$
4. CURRENTLY NO COLUMNS ARE SHOWN IN THE PLAN WHICH WILL BE INCORPORATED AS/ STRUCTURE
5. WHILE CONVERTING MILLIMETERS(MM) TO FEET-INCHES, INCHES ARE ROUNDED OFF TO NEAREST POSSIBLE WHOLE NUMBER FOR EASE OF CALCULATIONS.

1 SQ.MTRS = 10.764 SQ. FT.

ATS PRISTINE GOLF VILLAS

350 SQ YDS VILLA TYPE 1 SECOND FLOOR PLAN



ROW HOUSE 350 sq.yds.
TYPE -1

VILLA NO (1-09,16-29,56-58 & R1)

Terrace Area = 1387 sq.ft.

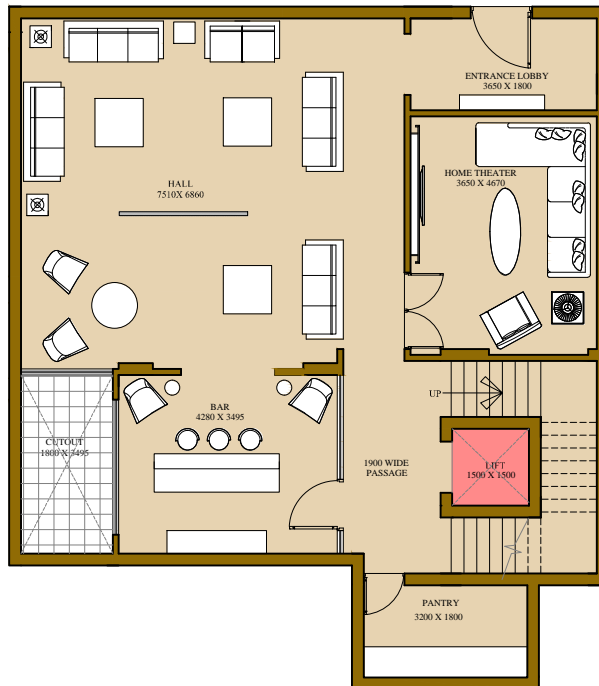
NOTE:

1. THE WINDOW SIZE/ ITS LOCATION IN ROOMS MAY CHANGE BECAUSE OF ELEVATIONAL FEATURES
2. THE OVERALL LAYOUT MAY VARY BECAUSE OF STATUTORY REASONS IN CASE REQUIRED
3. THE SUPER AREA MAY VARY BY ± 10%
4. CURRENTLY NO COLUMNS ARE SHOWN IN THE PLAN WHICH WILL BE INCORPORATED AS/ STRUCTURE
5. WHILE CONVERTING MILLIMETERS(MM) TO FEET-INCHES, INCHES ARE ROUNDED OFF TO NEAREST POSSIBLE WHOLE NUMBER FOR EASE OF CALCULATIONS.

1 SQ.MTRS = 10.764 SQ. FT.

ATS PRISTINE GOLF VILLAS

350 SQ YDS VILLA TYPE 2 BASEMENT PLAN



ROW HOUSE 350 sq.yds.
TYPE -2
VILLA NO (89-104)

NOTE:

1. THE WINDOW SIZE/ ITS LOCATION IN ROOMS MAY CHANGE BECAUSE OF ELEVATIONAL FEATURES
2. THE OVERALL LAYOUT MAY VARY BECAUSE OF STATUTORY REASONS IN CASE REQUIRED
3. THE SUPER AREA MAY VARY BY $\pm 10\%$
4. CURRENTLY NO COLUMNS ARE SHOWN IN THE PLAN WHICH WILL BE INCORPORATED AS/ STRUCTURE
5. WHILE CONVERTING MILLIMETERS(MM) TO FEET-INCHES, INCHES ARE ROUNDED OFF TO NEAREST POSSIBLE WHOLE NUMBER FOR EASE OF CALCULATIONS.

ATS PRISTINE GOLF VILLAS

1 SQ.MTRS = 10.764 SQ. FT.

350 SQ YDS VILLA TYPE 2 GROUND FLOOR PLAN



GROUND FLOOR

ROW HOUSE 350 sq.yds.
TYPE-2
VILLA NO (89-104)

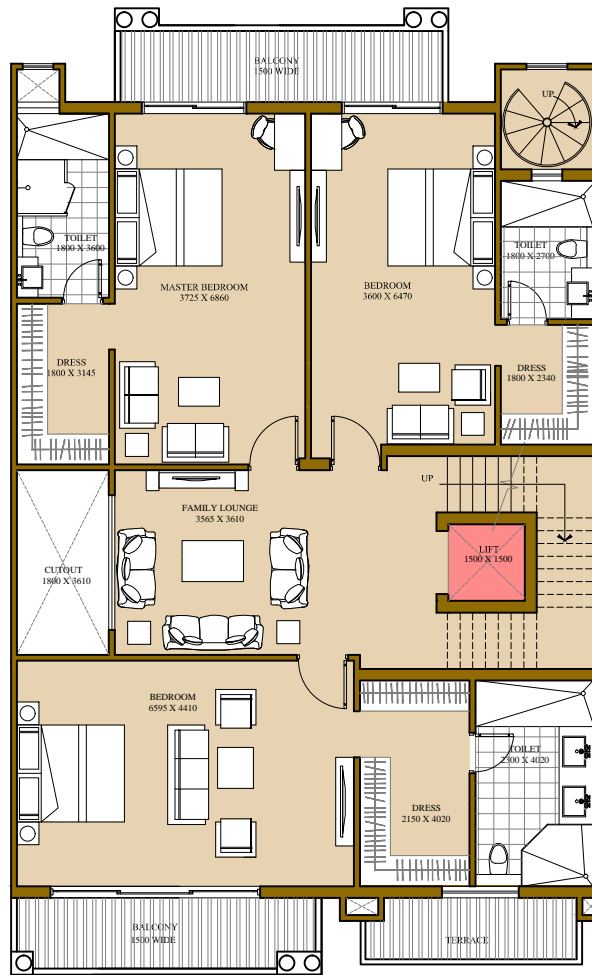
Super Area=5750 Sq Ft
Lawn Area=1087 Sq Ft
Private garden area=965 Sq Ft

- NOTE:
1. THE WINDOW SIZE/ ITS LOCATION IN ROOMS MAY CHANGE BECAUSE OF ELEVATIONAL FEATURES
 2. THE OVERALL LAYOUT MAY VARY BECAUSE OF STATUTORY REASONS IN CASE REQUIRED
 3. THE SUPER AREA MAY VARY BY ± 10%
 4. CURRENTLY NO COLUMNS ARE SHOWN IN THE PLAN WHICH WILL BE INCORPORATED AS/ STRUCTURE
 5. WHILE CONVERTING MILLIMETERS(MM) TO FEET-INCHES, INCHES ARE ROUNDED OFF TO NEAREST POSSIBLE WHOLE NUMBER FOR EASE OF CALCULATIONS.

ATS PRISTINE GOLF VILLAS

1 SQ.MTRS = 10.764 SQ. FT.

350 SQ YDS VILLA TYPE 2 FIRST FLOOR PLAN



FIRST FLOOR

ROW HOUSE 350 sq.yds.
TYPE -2
VILLA NO (89- 104)

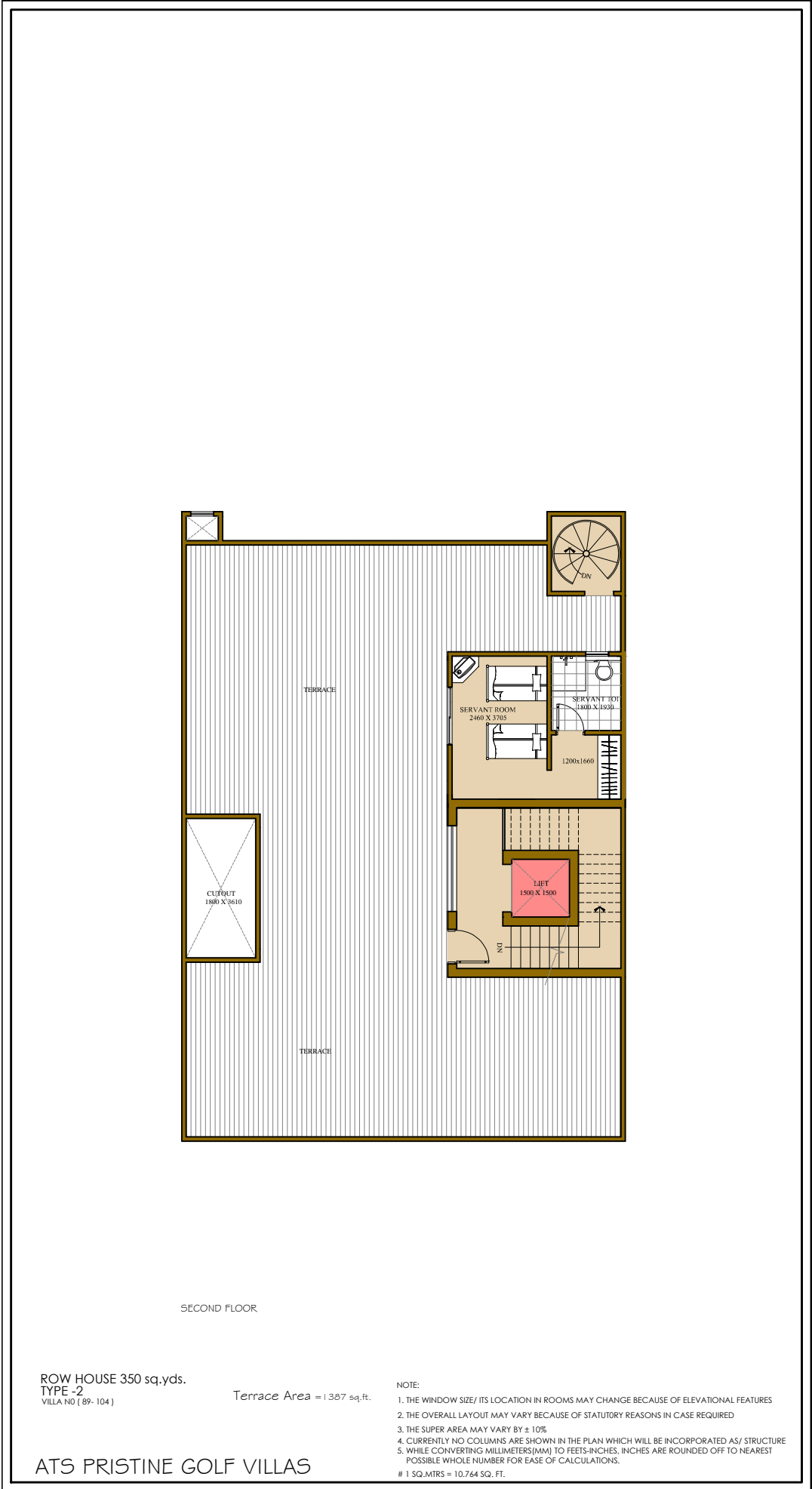
NOTE:

1. THE WINDOW SIZE/ ITS LOCATION IN ROOMS MAY CHANGE BECAUSE OF ELEVATIONAL FEATURES
2. THE OVERALL LAYOUT MAY VARY BECAUSE OF STATUTORY REASONS IN CASE REQUIRED
3. THE SUPER AREA MAY VARY BY $\pm 10\%$
4. CURRENTLY NO COLUMNS ARE SHOWN IN THE PLAN WHICH WILL BE INCORPORATED AS/ STRUCTURE
5. WHILE CONVERTING MILLIMETERS(MM) TO FEET-INCHES, INCHES ARE ROUNDED OFF TO NEAREST POSSIBLE WHOLE NUMBER FOR EASE OF CALCULATIONS.

1 SQ.MTRS = 10.764 SQ. FT.

ATS PRISTINE GOLF VILLAS

350 SQ YDS VILLA TYPE 2 SECOND FLOOR PLAN



SECOND FLOOR

ROW HOUSE 350 sq.yds.
TYPE -2
VILLA NO (89-104)

Terrace Area = 1.357 sq.ft.

NOTE:

1. THE WINDOW SIZE/ ITS LOCATION IN ROOMS MAY CHANGE BECAUSE OF ELEVATIONAL FEATURES
2. THE OVERALL LAYOUT MAY VARY BECAUSE OF STATUTORY REASONS IN CASE REQUIRED
3. THE SUPER AREA MAY VARY BY ± 10%
4. CURRENTLY NO COLUMNS ARE SHOWN IN THE PLAN WHICH WILL BE INCORPORATED AS/ STRUCTURE
5. WHILE CONVERTING MILLIMETERS(MM) TO FEET-INCHES, INCHES ARE ROUNDED OFF TO NEAREST POSSIBLE WHOLE NUMBER FOR EASE OF CALCULATIONS.

1 SQ.MTRS = 10.764 SQ. FT.

ATS PRISTINE GOLF VILLAS

500 SQ YDS VILLA TYPE - 1 BASEMENT PLAN



BASEMENT

ROW HOUSE 500 sq.yds.
TYPE-1

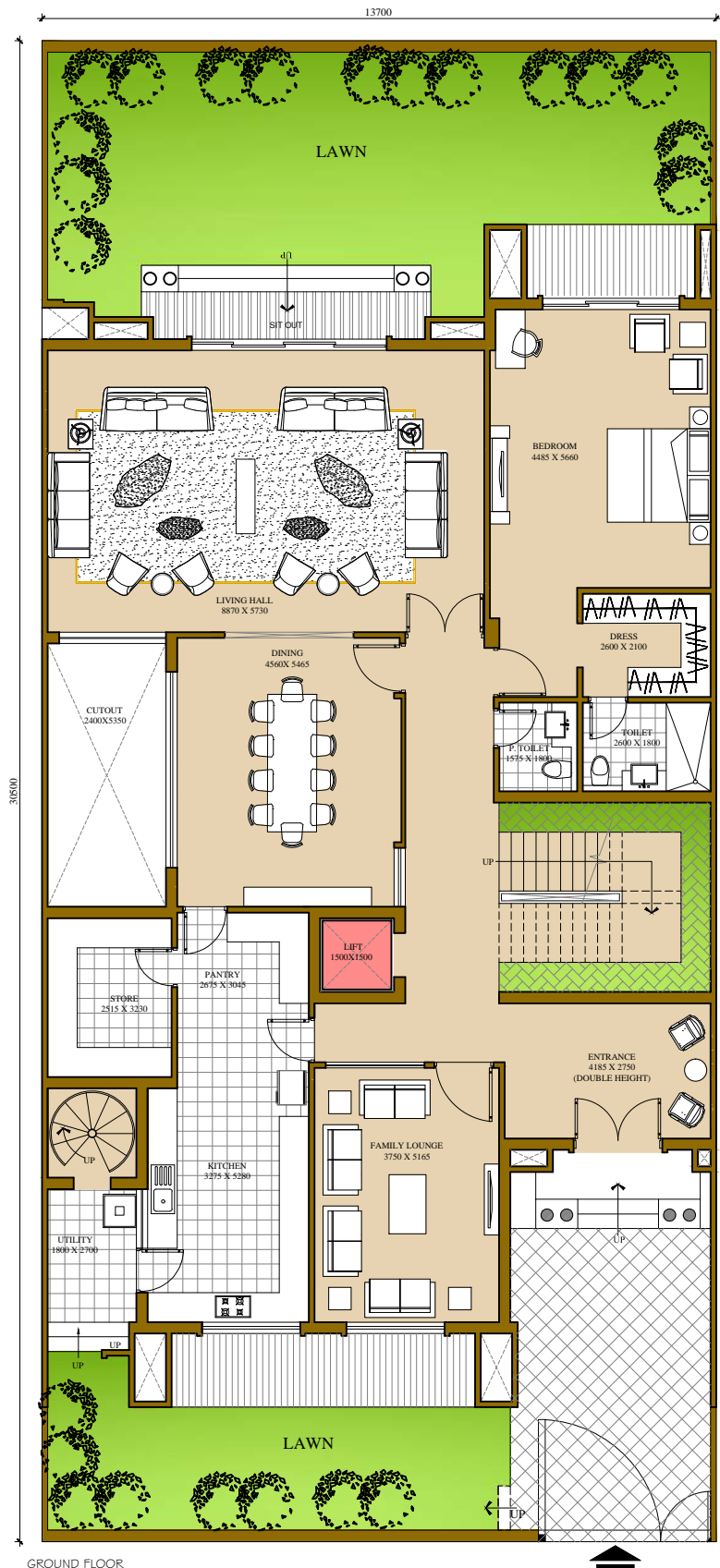
NO-10-15,30-46,59-82 & 105-114

NOTE:

1. THE WINDOW SIZE/ ITS LOCATION IN ROOMS MAY CHANGE BECAUSE OF ELEVATIONAL FEATURES
 2. THE OVERALL LAYOUT MAY VARY BECAUSE OF STATUTORY REASONS IN CASE REQUIRED
 3. THE SUPER AREA MAY VARY BY $\pm 10\%$
 4. CURRENTLY NO COLUMNS ARE SHOWN IN THE PLAN WHICH WILL BE INCORPORATED AS/ STRUCTURE
 5. WHILE CONVERTING MILLIMETERS(MM) TO FEET-INCHES, INCHES ARE ROUNDED OFF TO NEAREST POSSIBLE WHOLE NUMBER FOR EASE OF CALCULATIONS.
- # 1 SQ.MTRS = 10.764 SQ. FT.

ATS PRISTINE GOLF VILLA

500 SQ YDS VILLA TYPE - 1 GROUND FLOOR



GROUND FLOOR

ROW HOUSE 500 sq.yds.
TYPE-1

NO-10-15,30-46,59-82 & 105-114

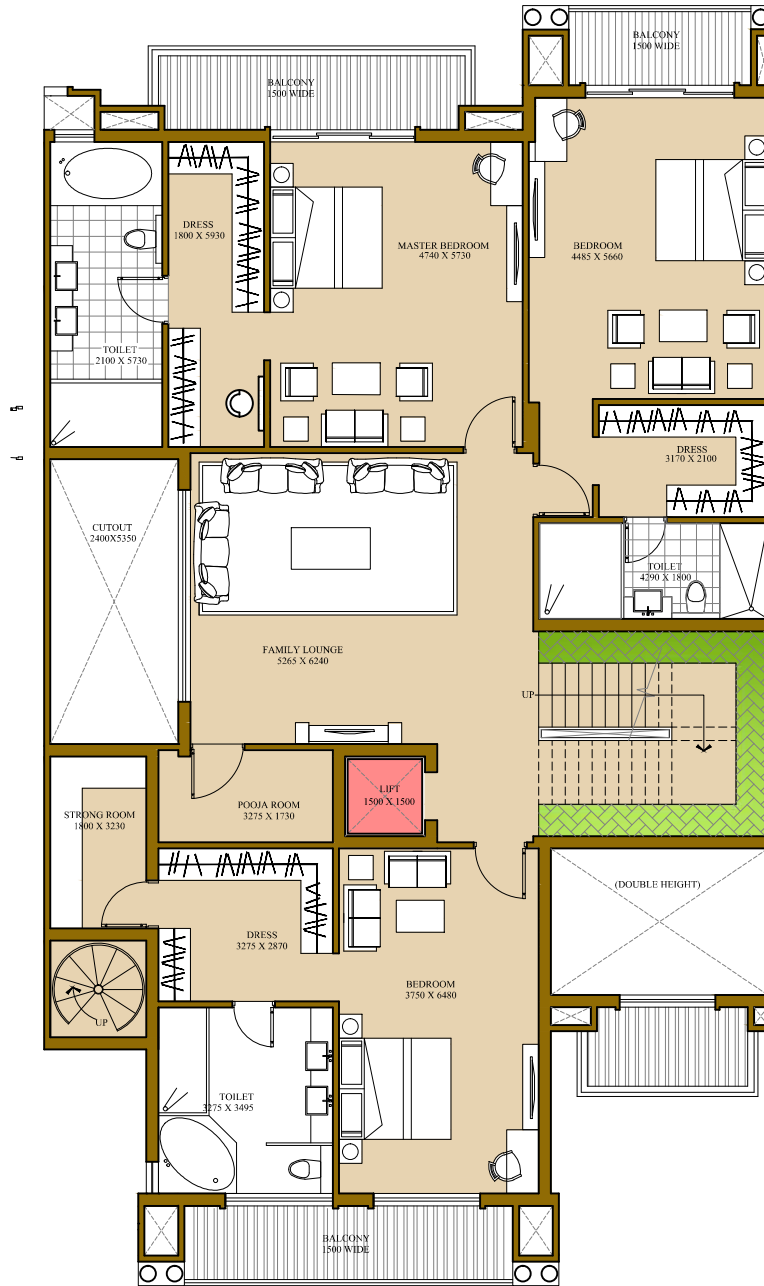
Super Area=8250 Sq Ft
Lawn Area= 1510.55 Sq Ft

NOTE:

1. THE WINDOW SIZE/ ITS LOCATION IN ROOMS MAY CHANGE BECAUSE OF ELEVATIONAL FEATURES
 2. THE OVERALL LAYOUT MAY VARY BECAUSE OF STATUTORY REASONS IN CASE REQUIRED
 3. THE SUPER AREA MAY VARY BY ± 10%
 4. CURRENTLY NO COLUMNS ARE SHOWN IN THE PLAN WHICH WILL BE INCORPORATED AS/ STRUCTURE
 5. WHILE CONVERTING MILLIMETERS(MM) TO FEET-INCHES, INCHES ARE ROUNDED OFF TO NEAREST POSSIBLE WHOLE NUMBER FOR EASE OF CALCULATIONS.
- # 1 SQ.MTRS = 10.764 SQ. FT.

ATS PRISTINE GOLF VILLA

500 SQ YDS VILLA TYPE -1 FIRST FLOOR PLAN



FIRST FLOOR

ROW HOUSE 500 sq.yds.
TYPE-1

NO-10-15,30-46,59-82 & 105-114

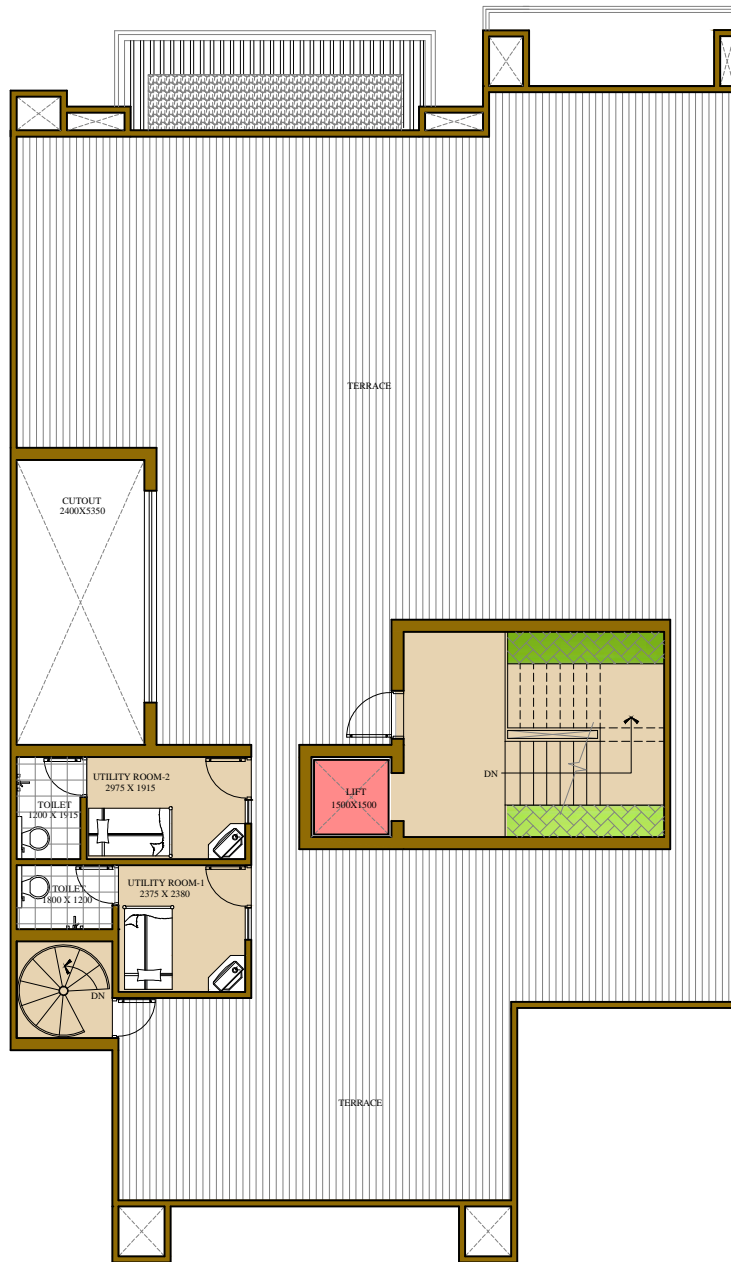
ATS PRISTINE GOLF VILLA

NOTE:

1. THE WINDOW SIZE/ ITS LOCATION IN ROOMS MAY CHANGE BECAUSE OF ELEVATIONAL FEATURES
2. THE OVERALL LAYOUT MAY VARY BECAUSE OF STATUTORY REASONS IN CASE REQUIRED
3. THE SUPER AREA MAY VARY BY $\pm 10\%$
4. CURRENTLY NO COLUMNS ARE SHOWN IN THE PLAN WHICH WILL BE INCORPORATED AS/ STRUCTURE
5. WHILE CONVERTING MILLIMETERS(MM) TO FEET-INCHES, INCHES ARE ROUNDED OFF TO NEAREST POSSIBLE WHOLE NUMBER FOR EASE OF CALCULATIONS.

1 SQ.MTRS = 10,764 SQ. FT.

500 SQ YDS VILLA TYPE - 1 SECOND FLOOR



SECOND FLOOR

Terrace Area = 2012.635 sq.ft.

ROW HOUSE 500 sq.yds.
TYPE-1

NO-10-15,30-46,59-82 & 105-114

NOTE:

1. THE WINDOW SIZE/ ITS LOCATION IN ROOMS MAY CHANGE BECAUSE OF ELEVATIONAL FEATURES
 2. THE OVERALL LAYOUT MAY VARY BECAUSE OF STATUTORY REASONS IN CASE REQUIRED
 3. THE SUPER AREA MAY VARY BY $\pm 10\%$
 4. CURRENTLY NO COLUMNS ARE SHOWN IN THE PLAN WHICH WILL BE INCORPORATED AS/ STRUCTURE
 5. WHILE CONVERTING MILLIMETERS(MM) TO FEETS-INCHES, INCHES ARE ROUNDED OFF TO NEAREST POSSIBLE WHOLE NUMBER FOR EASE OF CALCULATIONS.
- # 1 SQ.MTRS = 10.764 SQ. FT.

ATS PRISTINE GOLF VILLA

500 sq yd villa TYPE -2 BASEMENT PLAN



ROW HOUSE 500 sq.yds.
TYPE - 2
VILLA NO | 47-55 |

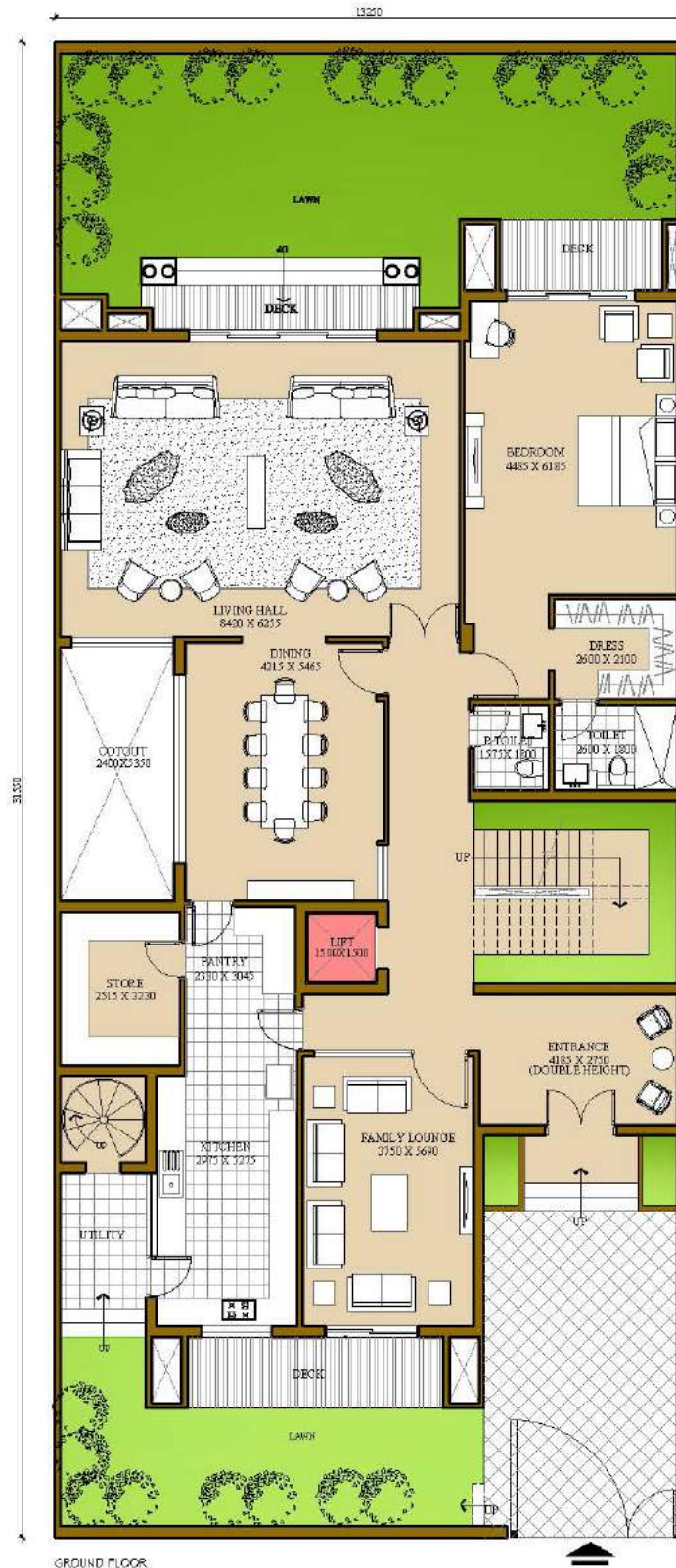
NOTE:

1. THE WINDOW SIZE/ITS LOCATION IN ROOMS MAY CHANGE BECAUSE OF ELEVATIONAL FEATURES
2. THE OVERALL LAYOUT MAY VARY BECAUSE OF STATUTORY REASONS IN CASE REQUIRED
3. THE SUPER AREA MAY VARY BY ± 10%
4. CURRENTLY NO COLUMNS ARE SHOWN IN THE PLAN WHICH WILL BE INCORPORATED AS / STRUCTURE
5. WHILE CONVERTING MILLIMETERS(MM) TO FEET-INCHES, INCHES ARE ROUNDED OFF TO NEAREST POSSIBLE WHOLE NUMBER FOR EASE OF CALCULATIONS.

* 1 SQ.MTRS = 10.7645 SQ. FT.

ATS PRISTINE GOLF VILLAS

500 sq yd villa TYPE-2 GROUND FLOOR



ROW HOUSE 500 sq.yds.
TYPE - 2

VILLA NO (47, 55)

Super Area = 8250 Sq.Ft
Garden Area = 1535 Sq.Ft

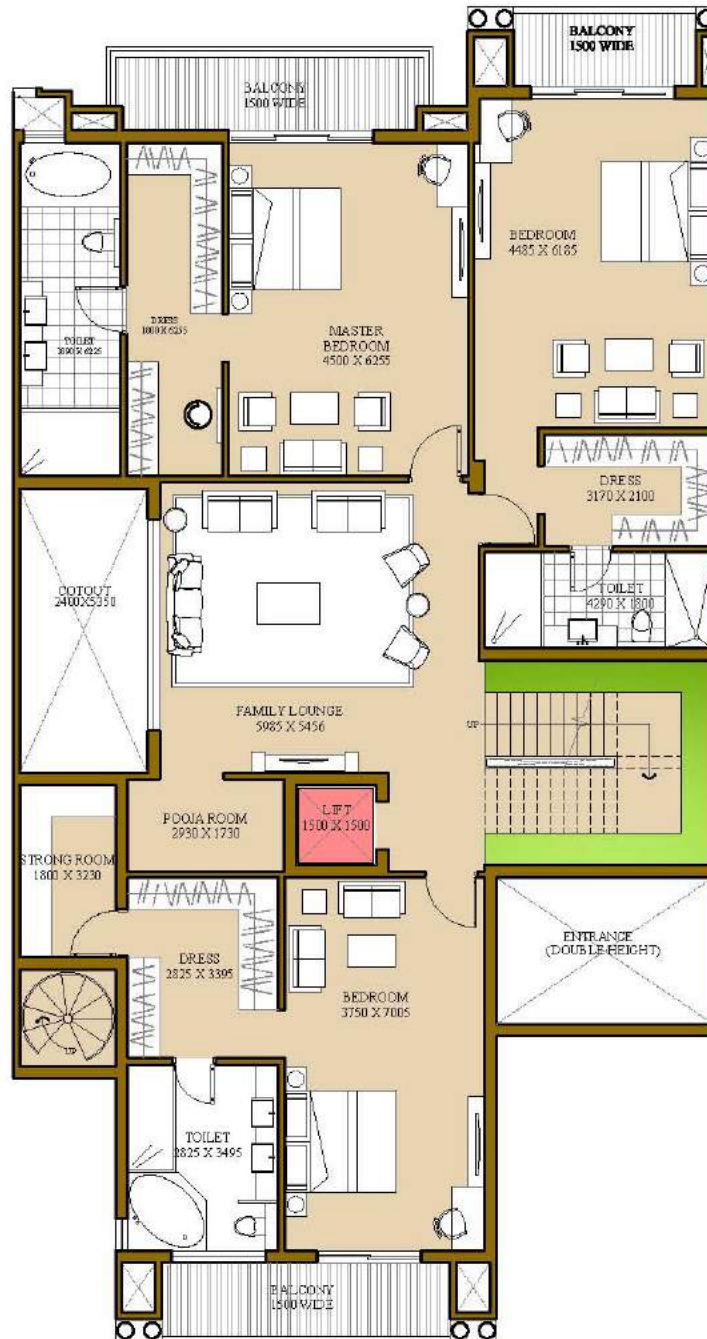
NOTE:

1. THE WINDOW SIZE/ITS LOCATION IN ROOMS MAY CHANGE BECAUSE OF ELEVATIONAL FEATURES
2. THE OVERALL LAYOUT MAY VARY BECAUSE OF STATUTORY REASONS IN CASE REQUIRED
3. THE SUPER AREA MAY VARY BY $\pm 10\%$
4. CURRENTLY NO COLUMNS ARE SHOWN IN THE PLAN WHICH WILL BE INCORPORATED AS / STRUCTURE
5. WHILE CONVERTING MILLIMETERS (MM) TO FEET-INCHES, INCHES ARE ROUNDED OFF TO NEAREST POSSIBLE WHOLE NUMBER FOR EASE OF CALCULATIONS.

* 1 SQ.MTRS = 10.7645 SQ. FT.

ATS PRISTINE GOLF VILLAS

500 sq yd villa TYPE - 2 _ FIRST FLOOR



FIRST FLOOR

ROW HOUSE 500 sq.yds.
TYPE - 2

VILLA NO | 47-55 |

NOTE:

1. THE WINDOW SIZE/ ITS LOCATION IN ROOMS MAY CHANGE BECAUSE OF ELEVATIONAL FEATURES
2. THE OVERALL LAYOUT MAY VARY BECAUSE OF STATUTORY REASONS IN CASE REQUIRED
3. THE SUPER AREA MAY VARY BY ± 10%
4. CURRENTLY NO COLUMNS ARE SHOWN IN THE PLAN WHICH WILL BE INCORPORATED AS/ STRUCTURE
5. WHILE CONVERTING MILLIMETERS(MM) TO FEET-INCHES, INCHES ARE ROUNDED OFF TO NEAREST POSSIBLE WHOLE NUMBER FOR EASE OF CALCULATIONS.

* 1 SQ.MTRS = 10.764 SQ. FT.

ATS PRISTINE GOLF VILLAS

500 sq yd villa TYPE - 2, SECOND FLOOR



SECOND FLOOR

ROW HOUSE 500 sq.yds.
TYPE - 2
VILLA NO | 47- 55 |

Terrace Area = 1979 sq.ft.

NOTE:

1. THE WINDOW SIZE/ ITS LOCATION IN ROOMS MAY CHANGE BECAUSE OF ELEVATIONAL FEATURES
 2. THE OVERALL LAYOUT MAY VARY BECAUSE OF STATUORY REASONS IN CASE REQUIRED
 3. THE SUPER AREA MAY VARY BY ± 10%
 4. CURRENTLY NO COLUMNS ARE SHOWN IN THE PLAN WHICH WILL BE INCORPORATED AS/ STRUCTURE
 5. WHILE CONVERTING MILLIMETERS[MM] TO FEET-INCHES, INCHES ARE ROUNDED OFF TO NEAREST POSSIBLE WHOLE NUMBER FOR EASE OF CALCULATIONS.
- # 1 SQ.MTRS = 10.764 SQ. FT.

ATS PRISTINE GOLF VILLAS