



WHITEHALL PALACE & WESTMINSTER PALACE

CONDOMINIUM - 1 (3 BHK)

Super Area - 251 Sq. mtr./ 2700 Sq. ft.
Built-up Area - 180 Sq. mtr./ 1940 Sq. ft.
Carpet Area - 130 Sq. mtr./ 1401 Sq. ft.
Balcony Area - 32.9 Sq. mtr./ 355 Sq. ft.

Wing - 5 (Whitehall Palace) &

Floors - 1, 2, 5, 6, 9, 10, 14, 15, 18, 19, 22, 23, 26, 27, 30, 31, 34, 35

Wing - 6 (Whitehall Palace)

Floors - 3, 4, 7, 8, 11, 12, 16, 17, 20, 21, 24, 25, 28, 29, 32, 33, 36, 37

Wing - 7 (Westminster Palace)

Floors - 3, 4, 7, 8, 11, 12, 16, 17, 20, 21

Wing - 8 (Westminster Palace)

Floors - 1, 2, 5, 6, 9, 10, 14, 15, 18, 19

3 Bedrooms, 3 Toilets, 1 Powder Room, Dining - Family Lounge,
Living Room, Kitchen, Str Room With Toilet, Balconies

CONDOMINIUM - 1 A (3 BHK)

Super Area - 265 Sq. mtr./ 2850 Sq. ft.
Built-up Area - 194 Sq. mtr./ 2090 Sq. ft.
Carpet Area - 130 Sq. mtr./ 1401 Sq. ft.
Balcony Area - 40.4 Sq. mtr./ 435 Sq. ft.

Wing - 5 (Whitehall Palace)

Floors - 3, 4, 7, 8, 11, 12, 16, 17, 20, 21, 24, 25, 28, 29, 32, 33, 36, 37

Wing - 6 (Whitehall Palace)

Floors - 2, 5, 6, 9, 10, 14, 15, 18, 19, 22, 23, 26, 27, 30, 31, 34, 35

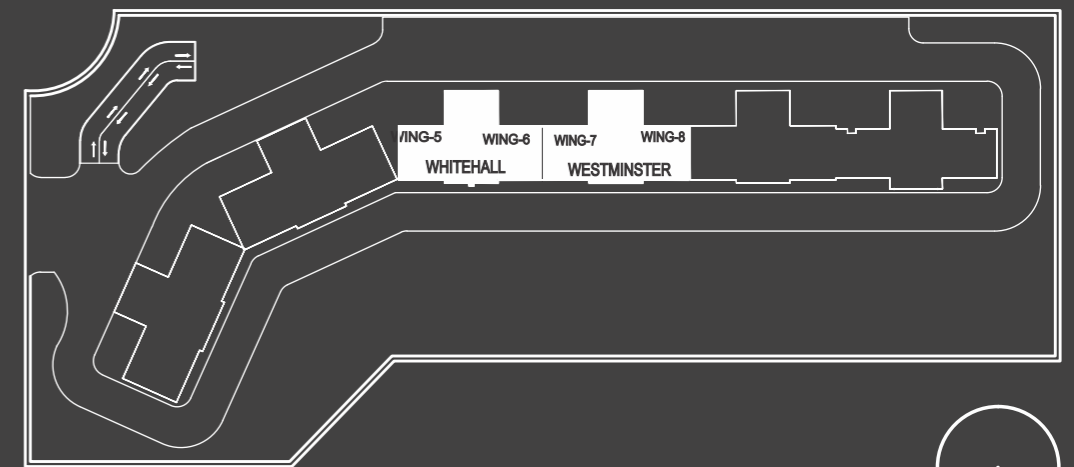
Wing - 7 (Westminster Palace)

Floors - 2, 5, 6, 9, 10, 14, 15, 18, 19

Wing - 8 (Westminster Palace)

Floors - 3, 4, 7, 8, 11, 12, 16, 17, 20, 21

3 Bedrooms, 3 Toilets, 1 Powder Room, Dining- Family Lounge,
Living Room, Kitchen, Str Room With Toilet, Balconies

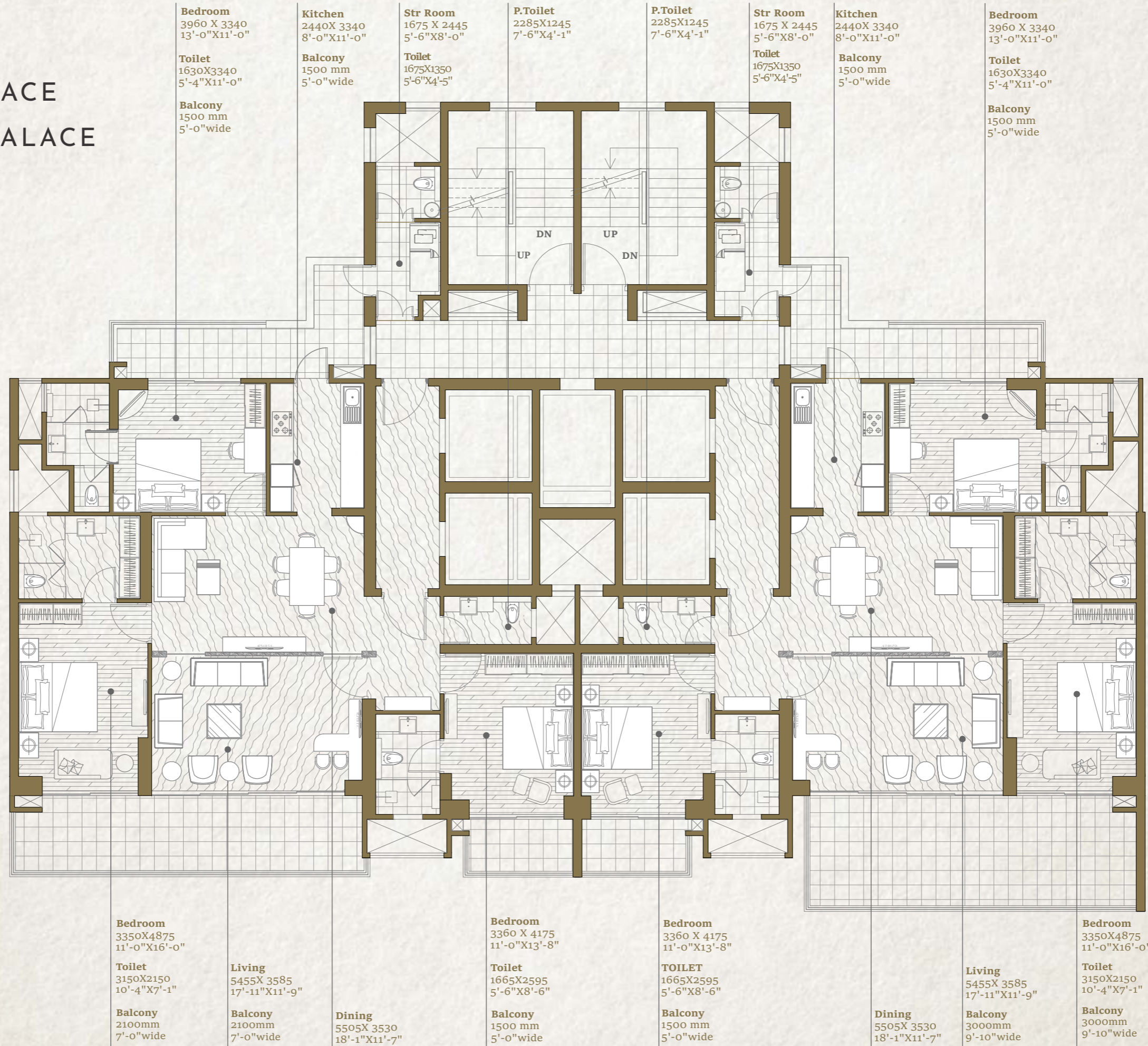


Key Plan

Disclaimer:

The depiction of images of layout and features as mentioned above are based on artistic impression. The customers are advised to check and re-verify the layout and features as mentioned from the website of RERA and/or from the office of the Developer. 1Sq mtr. = 10.764 sq. ft. The dimensions are from the unfinished walls (including skirting thickness). All Dimension are from the unfinished walls.

WHITEHALL PALACE & WESTMINSTER PALACE



The depiction of images of layout and features as mentioned above are based on artistic impression. The customers are advised to check and re-verify the layout and features as mentioned from the website of RERA and/or from the office of the Developer. 1Sq mtr. = 10.764 sq. ft. The dimensions are from the unfinished walls (including skirting thickness).



BRIDEWELL PALACE

CONDOMINIUM - 2F (4 BHK)

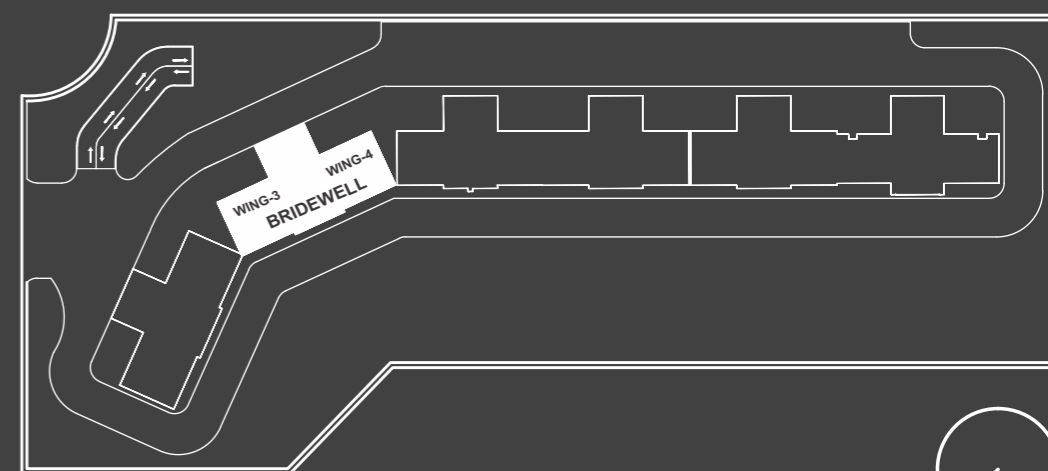
Super Area - 322 Sq. mtr./ 3465 Sq. ft.
 Built-up Area - 250 Sq. mtr./ 2690 Sq. ft.
 Carpet Area - 175 Sq. mtr./ 1878 Sq. ft.
 Balcony Area - 44.7 Sq. mtr./ 481 Sq. ft.
 Wing - 4 (Bridewell Palace)
 Floors - 3, 4, 7, 8, 11, 12, 16, 17, 20, 21,
 24, 25, 28, 29, 32, 33, 36, 37
 Wing - 3 (Bridewell Palace)
 Floors -2, 5, 6, 9, 10, 14, 15, 18, 19, 22, 23, 26, 27, 30, 31, 34, 35

4 Bedrooms, 4 Toilets, 1 Powder Room, Dining- Family Lounge,
 Living Room, Kitchen, STR Room with Toilet , Balconies

CONDOMINIUM - 2G (4 BHK)

Super Area - 309 Sq. mtr./ 3325 Sq. ft.
 Built-up Area - 237 Sq. mtr./ 2550 Sq. ft.
 Carpet Area - 175 Sq. mtr./ 1878 Sq. ft.
 Balcony Area - 38 Sq. mtr./ 409 Sq. ft.
 Wing - 3 (Bridewell Palace)
 Floors - 3, 4, 7, 8, 11, 12, 16, 17, 20, 21,
 24, 25, 28, 29, 32, 33, 36, 37
 Wing - 4 (Bridewell Palace)
 Floors -1, 2, 5, 6, 9, 10, 14, 15, 18, 19, 22, 23, 26, 27, 30, 31, 34, 35

4 Bedrooms, 3 Toilets, 1 Powder Room, Dining- Family Lounge,
 Living Room, Kitchen, STR Room with Toilet , Balconies

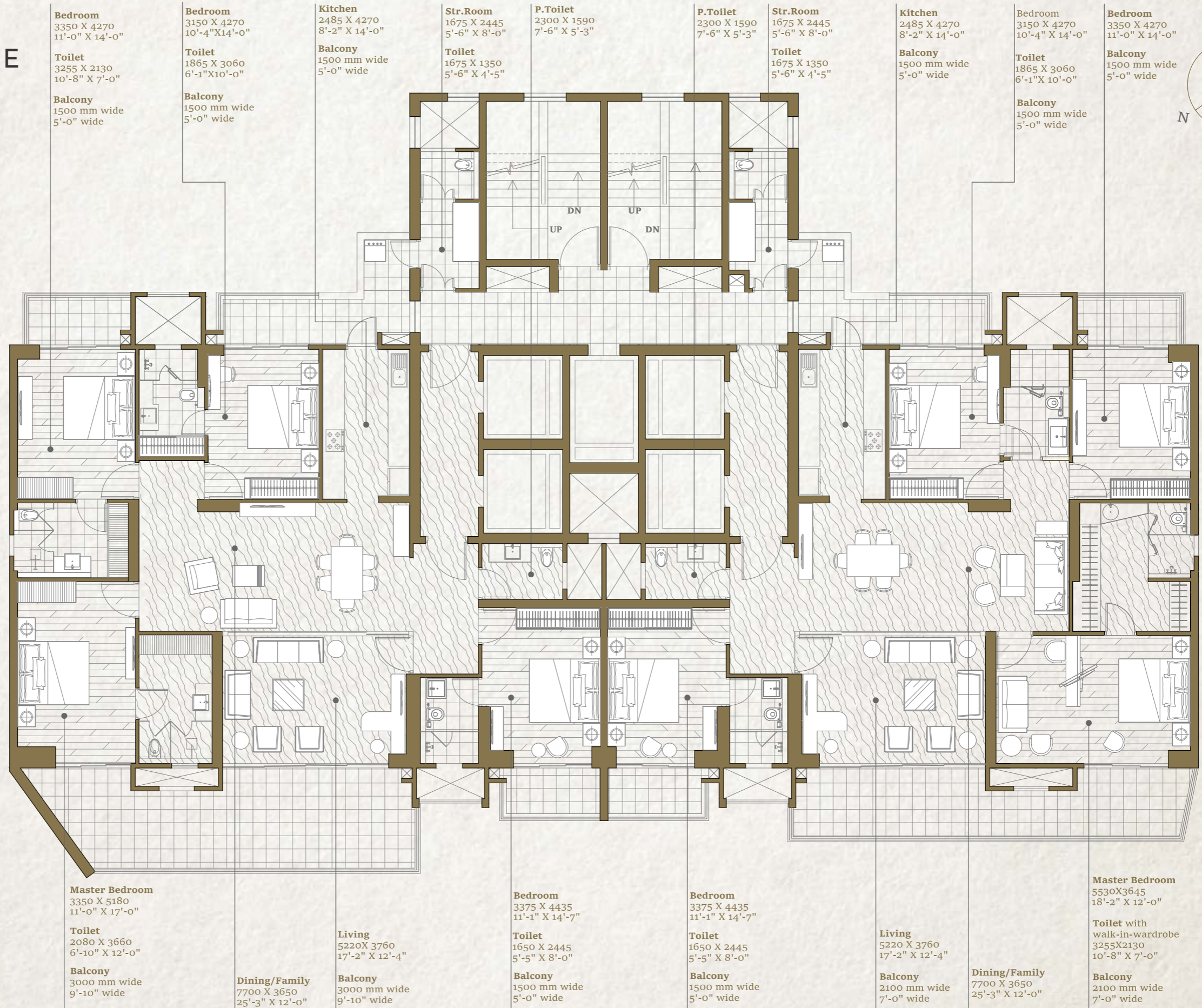


Key Plan

Disclaimer:

The depiction of images of layout and features as mentioned above are based on artistic impression. The customers are advised to check and re-verify the layout and features as mentioned from the website of RERA and/or from the office of the Developer. 1Sq mtr. = 10.764 sq. ft. The dimensions are from the unfinished walls (including skirting thickness). All Dimension are from the unfinished walls.

BRIDEWELL PALACE



The depiction of images of layout and features as mentioned above are based on artistic impression. The customers are advised to check and re-verify the layout and features as mentioned from the website of RERA and/or from the office of the Developer. 1Sq mtr. = 10.764 sq. ft. The dimensions are from the unfinished walls (including skirting thickness).



RICHMOND PALACE

CONDOMINIUM - 2 C (4 BHK)

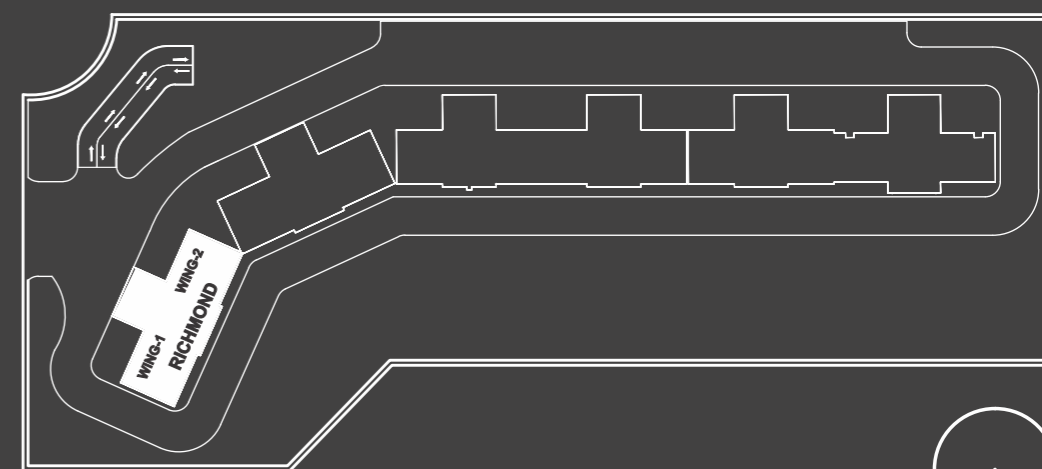
Super Area - 332 Sq. mtr./ 3575 Sq. ft.
 Built-up Area - 259 Sq. mtr./ 2790 Sq. ft.
 Carpet Area - 192 Sq. mtr./ 2071 Sq. ft.
 Balcony Area - 38.09 Sq. mtr./ 410 Sq. ft.
 Wing - 1 (Richmond Palace)
 Floors - 1, 2, 9, 10, 18, 19, 26, 27, 34, 35
 Super Area- 350.7 Sq.mtr./ 3775 Sq.ft.
 Built-up Area - 269.41 Sq.mtr./ 2900 Sq.ft.
 Carpet Area - 192.40 Sq. mtr./ 2071 Sq. ft.
 Balcony Area - 48.95 Sq. mtr./ 527 Sq. ft.
 Floors - 3, 8, 11, 17, 20, 25, 28, 33, 36

4 Bedrooms, 4 Toilets, 1 Powder Toilet, Dining / Family, Kitchen
 Living room, STR Room with Toilet, Balconies

CONDOMINIUM - 2 A (4 BHK)

Super Area - 322 Sq. mtr./ 3465 Sq. ft.
 Built-up Area - 250 Sq. Mtr./ 2690 Sq. ft.
 Carpet Area - 176.42 Sq. mtr./ 1899 Sq. ft.
 Balcony Area - 45.33 Sq. mtr./ 488 Sq. ft.
 Wing - 2 (Richmond Palace)
 Floors - 2, 5, 6, 9, 10, 14, 15, 18, 19, 22, 23, 26, 27, 30, 31, 34, 35

4 Bedrooms, 3 Toilets, 1 Powder Toilet, Dining / Family, Kitchen
 Living room, STR Room with Toilet, Balconies

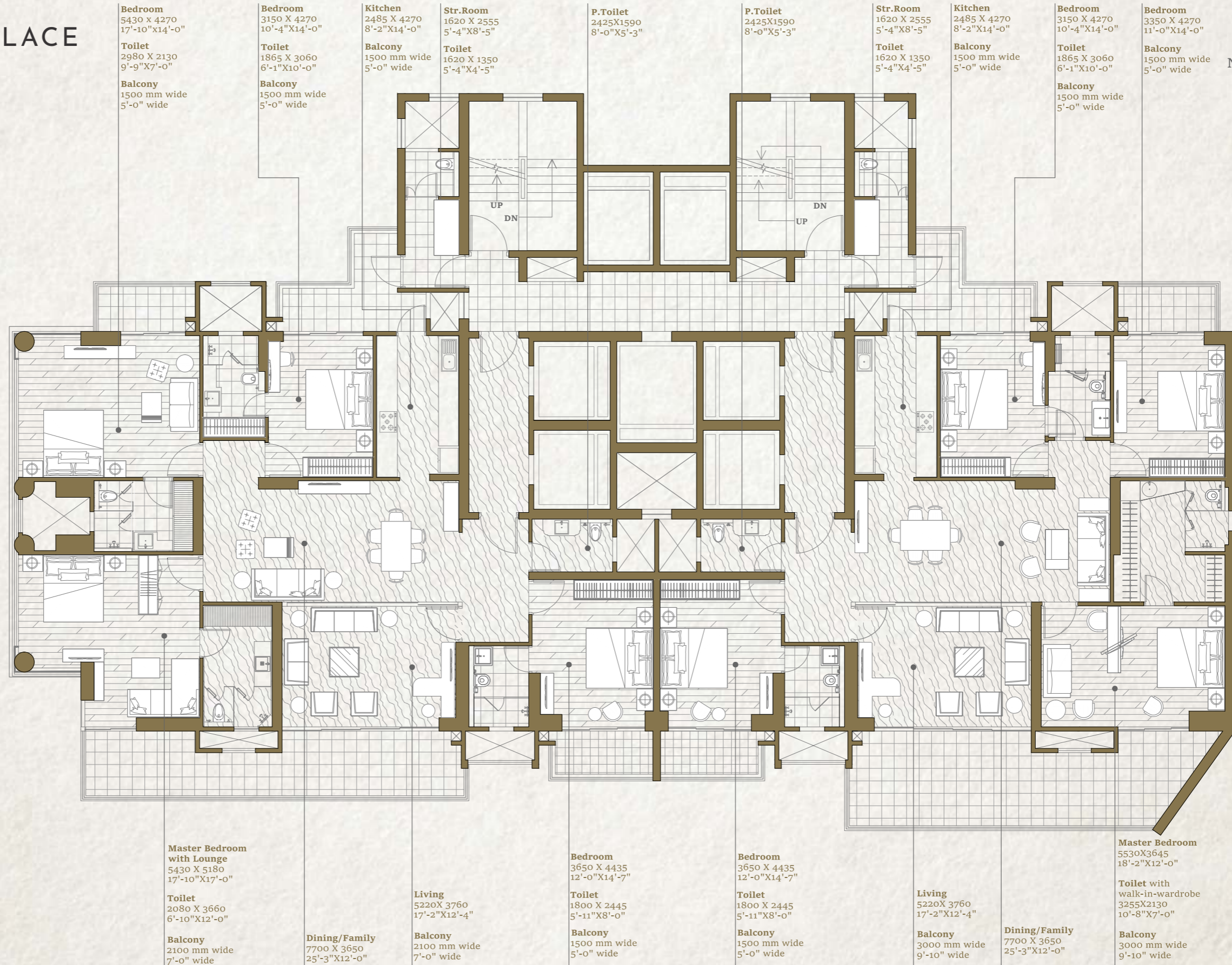


Key Plan

Disclaimer:

The depiction of images of layout and features as mentioned above are based on artistic impression. The customers are advised to check and re-verify the layout and features as mentioned from the website of RERA and/or from the office of the Developer. 1Sq mtr. = 10.764 sq. ft. The dimensions are from the unfinished walls (including skirting thickness). All Dimension are from the unfinished walls.

RICHMOND PALACE



The depiction of images of layout and features as mentioned above are based on artistic impression. The customers are advised to check and re-verify the layout and features as mentioned from the website of RERA and/or from the office of the Developer. 1Sq mtr. = 10.764 sq. ft. The dimensions are from the unfinished walls (including skirting thickness).



RICHMOND PALACE

CONDOMINIUM - 2 B (4 BHK)

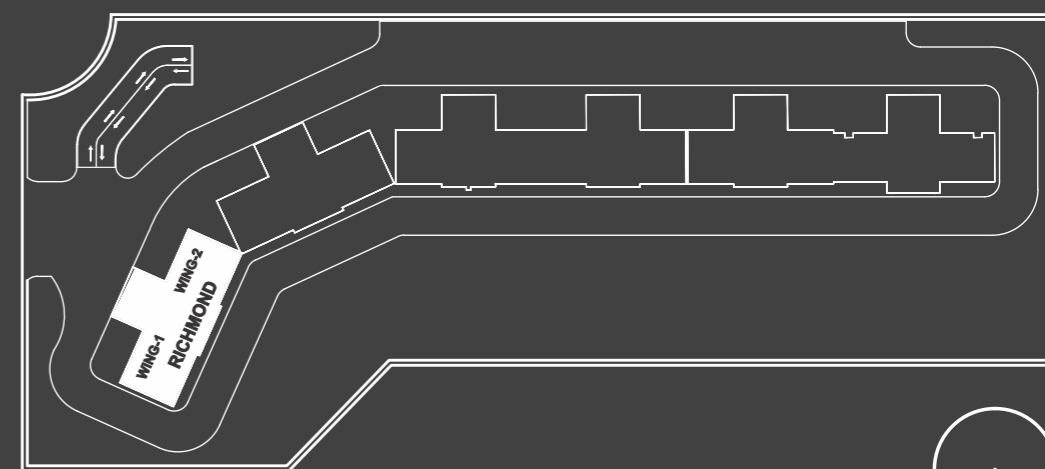
Super Area - 345 Sq. mtr./ 3715 Sq. ft.
 Built-up Area - 268 Sq. Mtr./ 2886 Sq. ft.
 Carpet Area - 178 Sq. mtr./ 1912 Sq. ft.
 Balcony Area - 41.99 Sq. mtr./ 452 Sq. ft.
 Deck Area - 14.12 Sq. mtr./ 152 Sq. ft.
 Wing - 1 (Richmond Palace)
 Floors - 4, 12, 21, 29, 37

4 Bedrooms, 4 Toilets, 1 Powder Toilet, Dining / Family, Kitchen
 Living room, STR Room with Toilet, Balconies and Deck

CONDOMINIUM - 2 (4 BHK)

Super Area - 309 Sq. mtr./ 3325 Sq. ft.
 Built-up Area - 237 Sq. Mtr./ 2550 Sq. ft.
 Carpet Area - 176.42 Sq. mtr./ 1899 Sq. ft.
 Balcony Area - 45.33 Sq. mtr./ 395 Sq. ft.
 Wing - 2 (Richmond Palace)
 Floors - 3, 4, 7, 8, 11, 12, 16, 17, 20, 21, 24, 25, 28, 29, 32, 33, 36, 37

4 Bedrooms, 3 Toilets, 1 Powder Toilet, Dining / Family, Kitchen
 Living room, STR Room with Toilet, Balconies

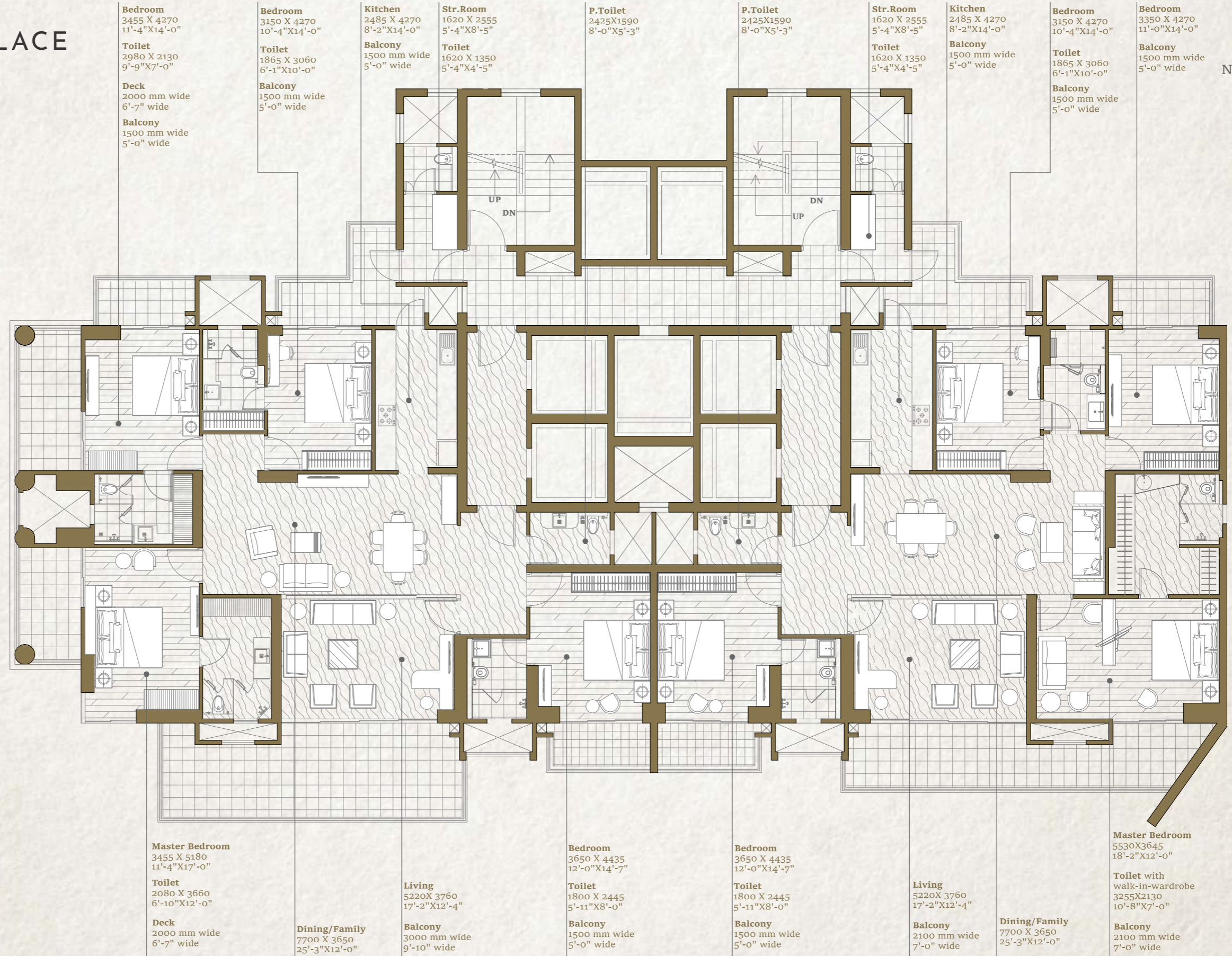


Key Plan

Disclaimer:

The depiction of images of layout and features as mentioned above are based on artistic impression. The customers are advised to check and re-verify the layout and features as mentioned from the website of RERA and/or from the office of the Developer. 1Sq mtr. = 10.764 sq. ft. The dimensions are from the unfinished walls (including skirting thickness). All Dimension are from the unfinished walls.

RICHMOND PALACE



The depiction of images of layout and features as mentioned above are based on artistic impression. The customers are advised to check and re-verify the layout and features as mentioned from the website of RERA and/or from the office of the Developer. 1Sq mtr. = 10.764 sq. ft. The dimensions are from the unfinished walls (including skirting thickness).



RICHMOND PALACE

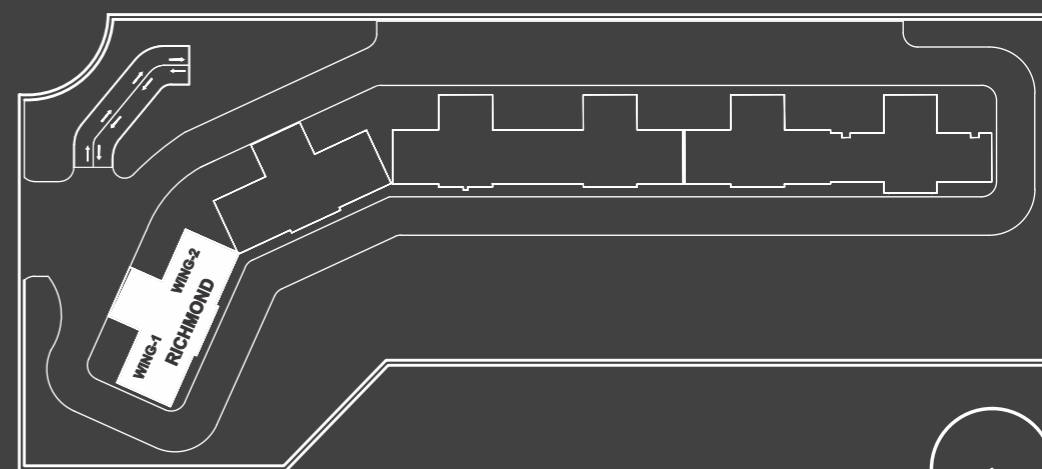
CONDOMINIUM - 2 E (4 BHK)

Super Area - 322 Sq. mtr./ 3465 Sq. ft.
 Built-up Area - 250 Sq. mtr./ 2690 Sq. ft.
 Carpet Area - 176.70 Sq. mtr./ 1902 Sq. ft.
 Balcony Area - 50.53 Sq. mtr./ 544 Sq. ft.
 Wing - 1 (Richmond Palace)
 Floors - 7, 16, 24, 32
 Super Area - 308.9 Sq. mtr./ 3325 Sq. ft.
 Built-up Area - 236.90 Sq. Mtr./ 2550 Sq. ft.
 Carpet Area - 176.70 Sq. mtr./ 1902 Sq. ft.
 Balcony Area - 39.94 Sq. mtr./ 430 Sq. ft.
 Floors - 5, 6, 14, 15, 22, 23, 30, 31

4 Bedrooms, 4 Toilets, 1 Powder Toilet, Dining / Family, Living room, Kitchen STR Room with Toilet, Balconies

CONDOMINIUM - 2 (4 BHK)

Super Area - 309 Sq. mtr./ 3325 Sq. ft.
 Built-up Area - 237 Sq. mtr./ 2550 Sq. ft.
 Carpet Area - 176.42 Sq. mtr./ 1899 Sq. ft.
 Balcony Area - 36.69 Sq. mtr./ 395 Sq. ft.
 Wing - 2 (Richmond Palace)
 Floors - 3, 4, 7, 8, 11, 12, 16, 17, 20, 21, 24, 25, 28, 29, 32, 33, 36, 37
 4 Bedrooms, 3 Toilets, 1 Powder Toilet, Dining / Family, Kitchen Living room, STR Room with Toilet, Balconies

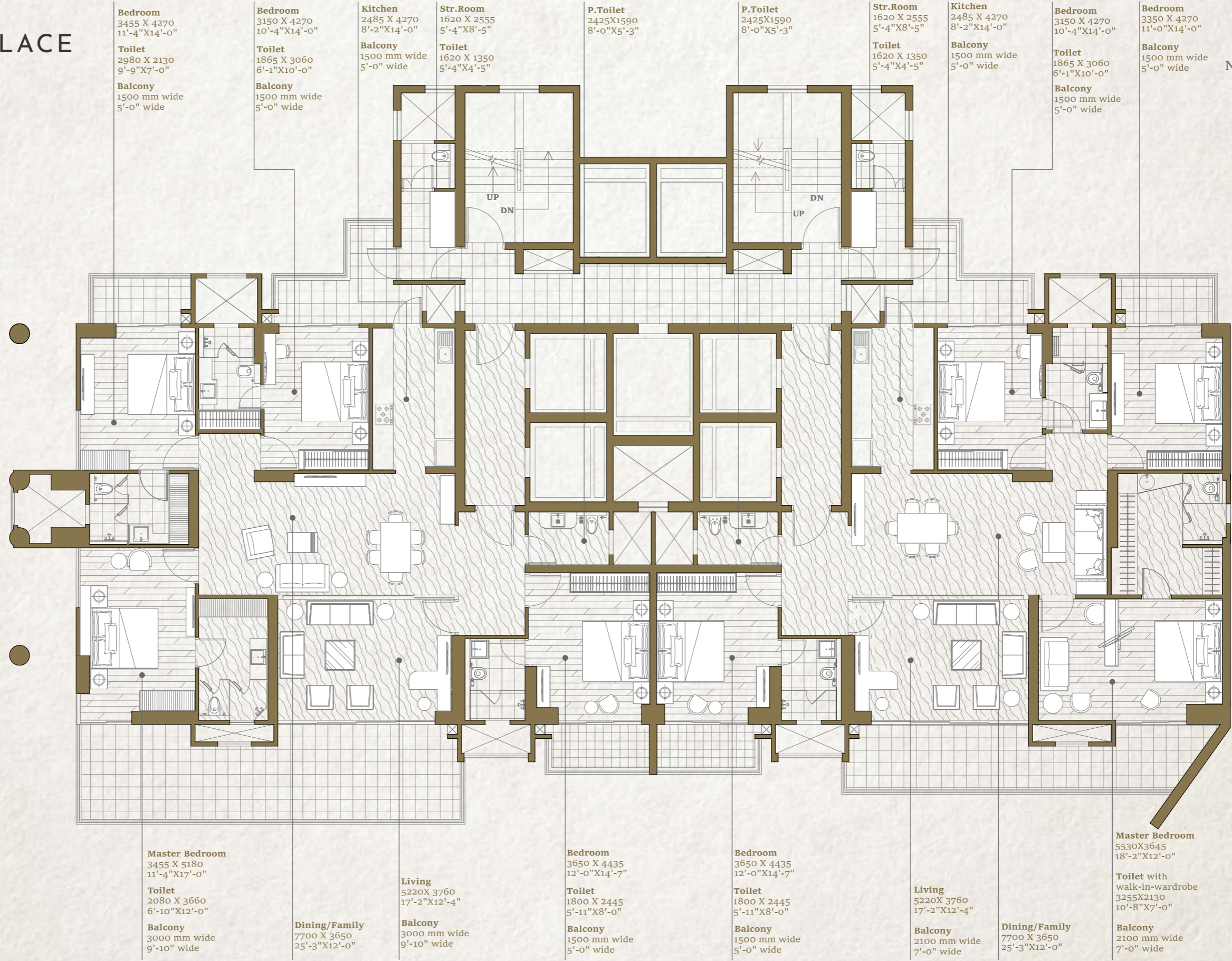


Key Plan

Disclaimer:

The depiction of images of layout and features as mentioned above are based on artistic impression. The customers are advised to check and re-verify the layout and features as mentioned from the website of RERA and/or from the office of the Developer. 1Sq mtr. = 10.764 sq. ft. The dimensions are from the unfinished walls (including skirting thickness). All Dimension are from the unfinished walls.

RICHMOND PALACE



The depiction of images of layout and features as mentioned above are based on artistic impression. The customers are advised to check and re-verify the layout and features as mentioned from the website of RERA and/or from the office of the Developer. 1Sq mtr. = 10.764 sq. ft. The dimensions are from the unfinished walls (including skirting thickness).



BUCKINGHAM PALACE

CONDOMINIUM - 3 (5 BHK)

Super Area - 581 Sq. mtr./ 6250 Sq. ft.

Built-up Area - 459 Sq. mtr./ 4950 Sq. ft.

Carpet Area - 328 Sq. mtr./ 3530 Sq. ft.

Balcony Area - 80.08 Sq. mtr./ 862 Sq. ft.

Wing-11 (Buckingham Palace)

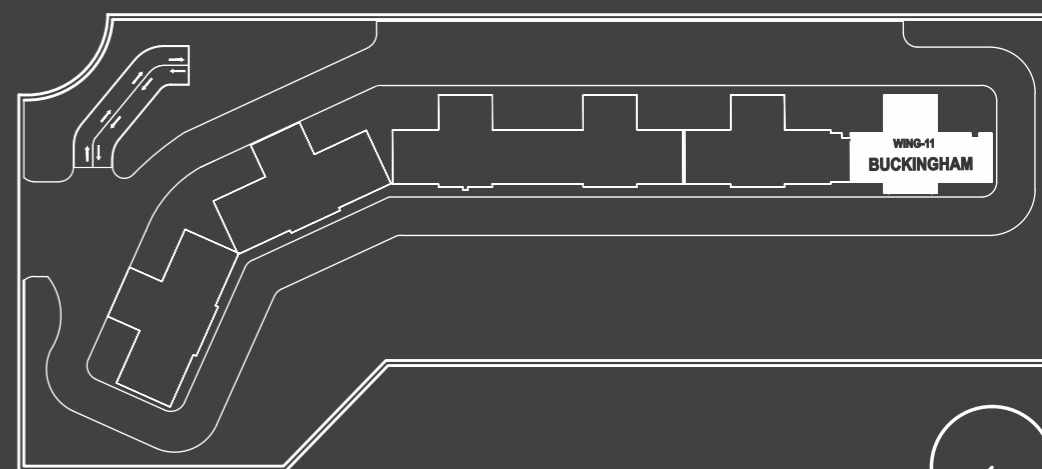
Floors - 3, 4, 7, 8, 11, 12, 16, 17, 20, 21, 24, 25, 28, 29, 32, 33, 36

Balcony Area - 81.47 sq. mtr./ 877 sq. ft.

Floors - 2, 5, 6, 9, 10, 14, 15, 18, 19, 22, 23, 26, 27, 30, 31, 34, 35

4 Bedrooms, 4 Toilets, 1 Powder Toilet, Formal Living Room / Dining,

Family Lounge / Dining, Lounge / Guest Bedroom, Kitchen, utility, STR Room with Toilet, Balconies

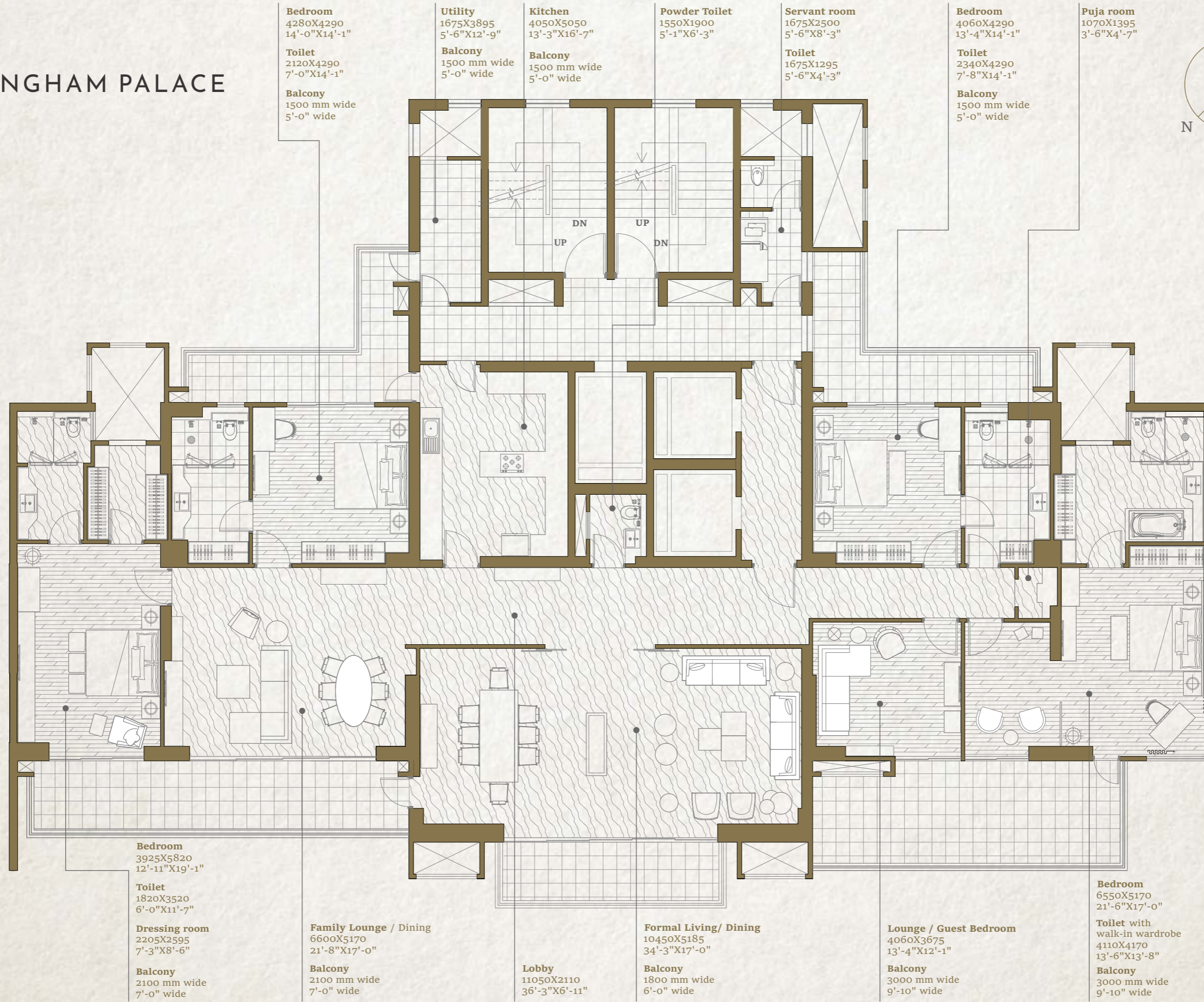


Key Plan

Disclaimer:

The depiction of images of layout and features as mentioned above are based on artistic impression. The customers are advised to check and re-verify the layout and features as mentioned from the website of RERA and/or from the office of the Developer. 1Sq mtr. = 10.764 sq. ft. The dimensions are from the unfinished walls (including skirting thickness). All Dimension are from the unfinished walls.

BUCKINGHAM PALACE



Bedroom
4280X4290
14'-0"X14'-1"

Toilet
2120X4290
7'-0"X14'-1"

Balcony
1500 mm wide
5'-0" wide

Utility
1675X3895
5'-6"X12'-9"

Balcony
1500 mm wide
5'-0" wide

Kitchen
4050X5050
13'-3"X16'-7"

Balcony
1500 mm wide
5'-0" wide

Powder Toilet
1550X1900
5'-1"X6'-3"

Servant room
1675X2500
5'-6"X8'-3"

Toilet
1675X1295
5'-6"X4'-3"

Bedroom
4060X4290
13'-4"X14'-1"

Toilet
2340X4290
7'-8"X14'-1"

Balcony
1500 mm wide
5'-0" wide

Puja room
1070X1395
3'-6"X4'-7"

Bedroom
3925X5820
12'-11"X19'-1"

Toilet
1820X3520
6'-0"X11'-7"

Dressing room
2205X2595
7'-3"X8'-6"

Balcony
2100 mm wide
7'-0" wide

Family Lounge / Dining
6600X5170
21'-8"X17'-0"

Balcony
2100 mm wide
7'-0" wide

Lobby
11050X2110
36'-3"X6'-11"

Formal Living/ Dining
10450X5185
34'-3"X17'-0"

Balcony
1800 mm wide
6'-0" wide

Lounge / Guest Bedroom
4060X3675
13'-4"X12'-1"

Balcony
3000 mm wide
9'-10" wide

Bedroom
6550X5170
21'-6"X17'-0"

Toilet with walk-in wardrobe
4110X4170
13'-6"X13'-8"

Balcony
3000 mm wide
9'-10" wide

The depiction of images of layout and features as mentioned above are based on artistic impression. The customers are advised to check and re-verify the layout and features as mentioned from the website of RERA and/or from the office of the Developer. 1Sq mtr. = 10.764 sq. ft. The dimensions are from the unfinished walls (including skirting thickness).



KENSINGTON PALACE

CONDOMINIUM - 3A (5 BHK)

Super Area - 581 Sq. mtr./ 6250 Sq. ft.

Built-up Area - 459 Sq. mtr./ 4950 Sq. ft.

Carpet Area - 328 Sq. mtr./ 3530 Sq. ft.

Balcony Area - 86.02 Sq. mtr./ 926 Sq. ft.

Wing - 9 & 10 (Kensington Palace)

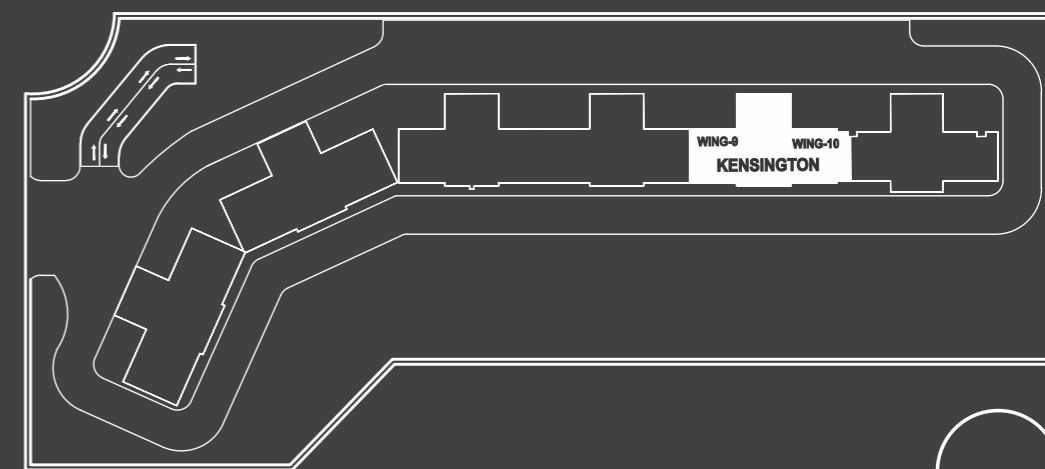
Floors - 18, 19, 22, 23, 26, 27, 30, 31, 34, 35

Wing: 9 & 10 (Kensington Palace)

Floors - 20, 21, 24, 25, 28, 29, 32, 33, 36, 37

4 Bedrooms, 4 Toilets, 1 Powder Toilet, Formal Living Room / Dining

Family Lounge / Dining, Lounge / Guest Bedroom, Kitchen, utility, STR Room with Toilet, Balconies

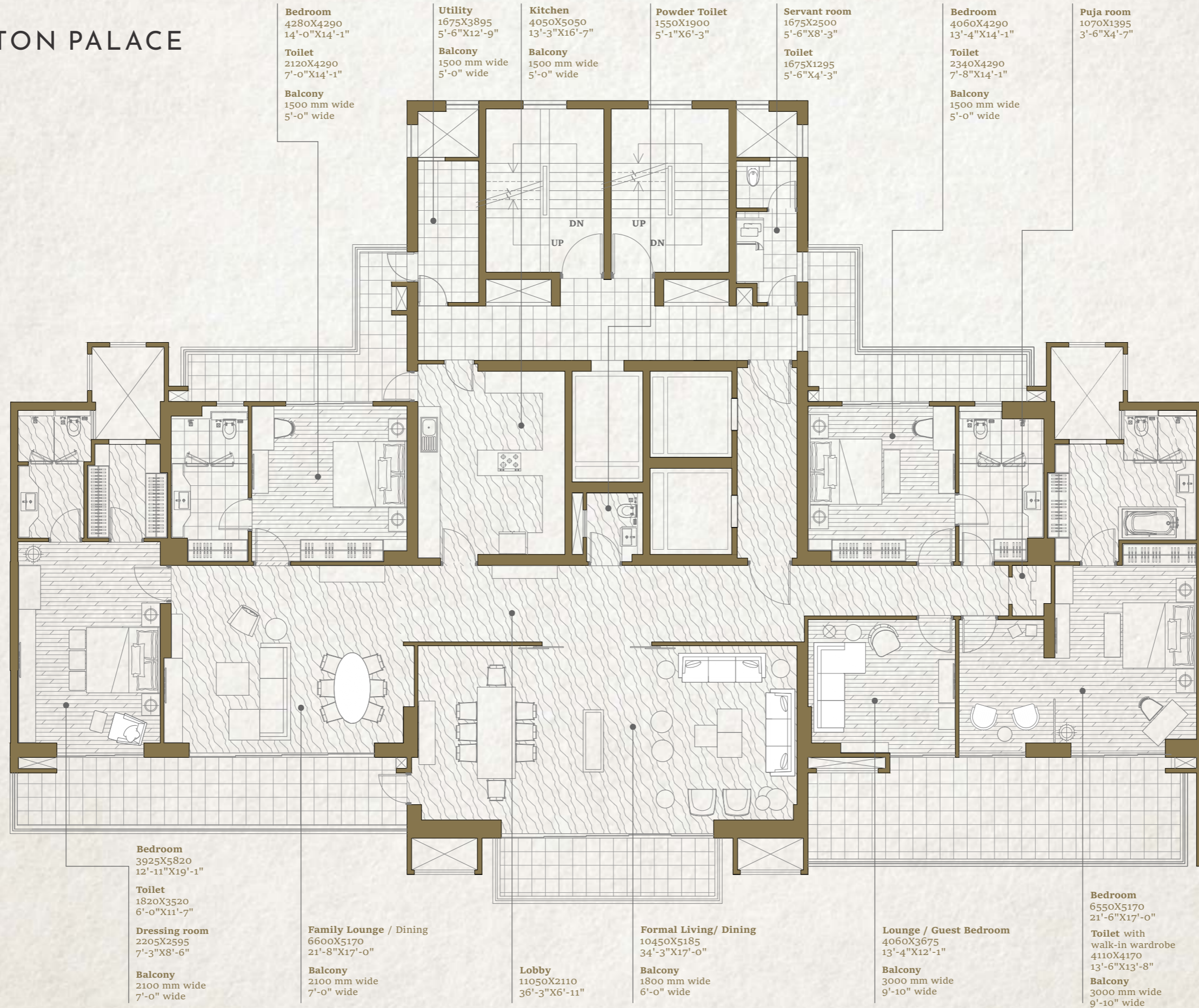


Key Plan

Disclaimer:

The depiction of images of layout and features as mentioned above are based on artistic impression. The customers are advised to check and re-verify the layout and features as mentioned from the website of RERA and/or from the office of the Developer. 1Sq mtr. = 10.764 sq. ft. The dimensions are from the unfinished walls (including skirting thickness). All Dimension are from the unfinished walls.

KENSINGTON PALACE





KENSINGTON PALACE

LOWER FLOOR Villament 1 (5 BHK)

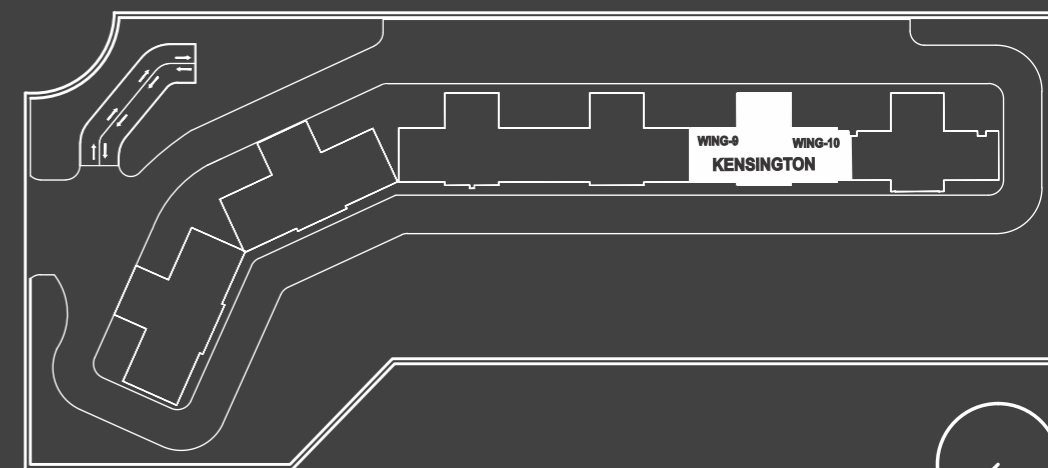
Super Area - 548 Sq. mtr./ 5900 Sq. ft.
 Built-up Area - 396.20 Sq. m Mtr./ 4265 Sq. ft.
 Carpet Area - 274 Sq. mtr./ 2948 Sq. ft.
 Balcony Area - 69.21 Sq. mtr./ 745 Sq. ft.
 Wing - 9 (Kensington Palace)
 Floors - 1, 5, 9, 14
 Wing: 10 (Kensington Palace)
 Floors - 3, 7, 11, 16

5 Bedrooms, 5 Toilets, 1 Powder Room, Living Room, Lounge & Dining Room, Family Lounge, Kitchen, Pantry, STR Room, STR Toilet, Balconies

LOWER FLOOR Villament 1A (5 BHK)

Super Area - 567 Sq. mtr./ 6100 Sq. ft.
 Built-up Area - 410.60 Sq. mtr./ 4420 Sq. ft.
 Carpet Area - 273 Sq. mtr./ 2941 Sq. ft.
 Balcony Area - 87.1 Sq. mtr./ 938 Sq. ft.
 Wing - 9 (Kensington Palace)
 Floors - 3, 7, 11, 16
 Wing: 10 (Kensington Palace)
 Floors - 5, 9, 14

5 Bedrooms, 5 Toilets, 1 Powder Room, Living Room, Lounge & Dining Room, Family Lounge, Kitchen, Pantry, STR Room, STR Toilet, Balconies

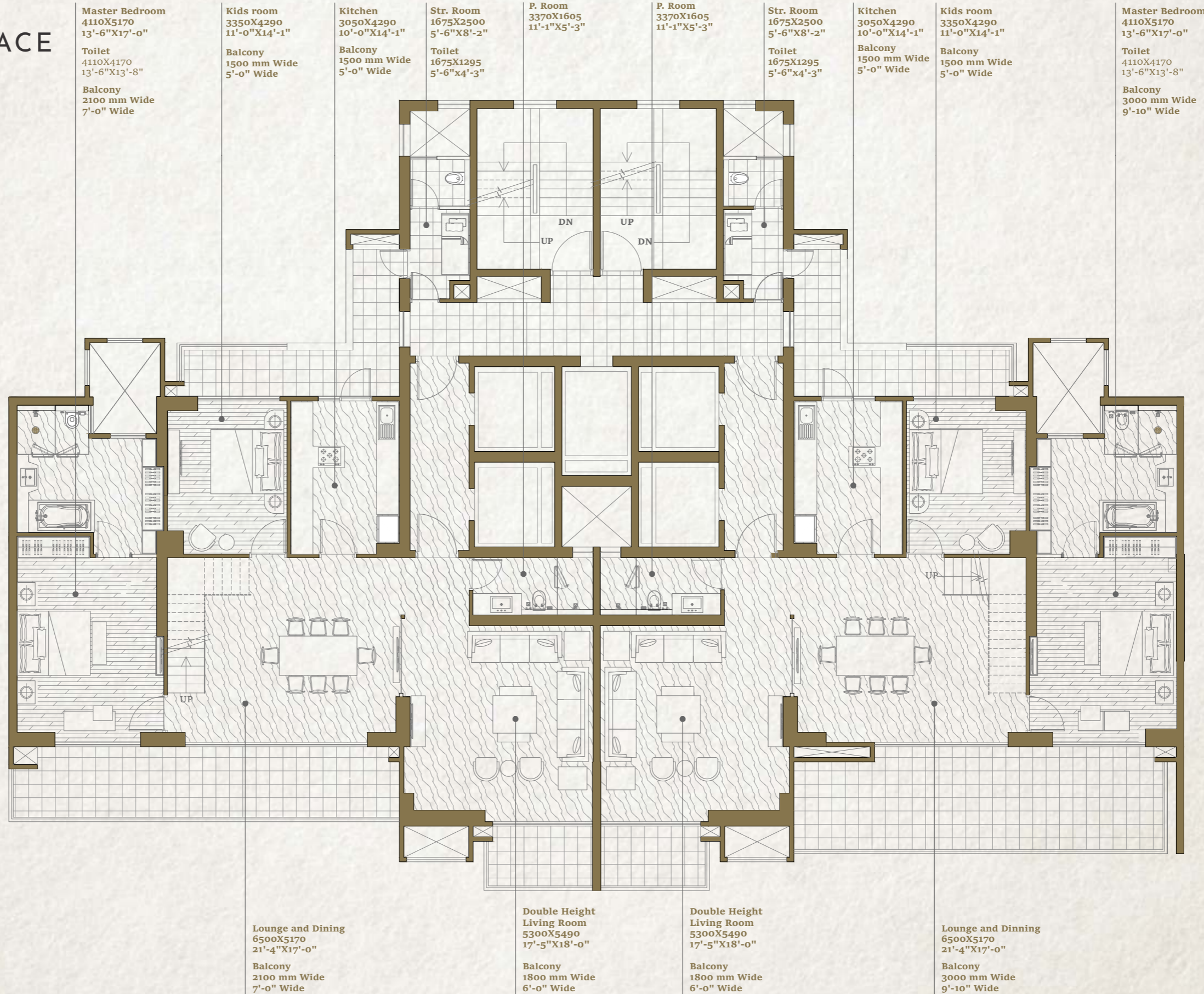


Key Plan

Disclaimer:

The depiction of images of layout and features as mentioned above are based on artistic impression. The customers are advised to check and re-verify the layout and features as mentioned from the website of RERA and/or from the office of the Developer. 1Sq mtr. = 10.764 sq. ft. The dimensions are from the unfinished walls (including skirting thickness). All Dimension are from the unfinished walls.

KENSINGTON PALACE



The depiction of images of layout and features as mentioned above are based on artistic impression. The customers are advised to check and re-verify the layout and features as mentioned from the website of RERA and/or from the office of the Developer. 1Sq mtr. = 10.764 sq. ft. The dimensions are from the unfinished walls (including skirting thickness).



KENSINGTON PALACE

UPPER FLOOR Villament 1 (5 BHK)

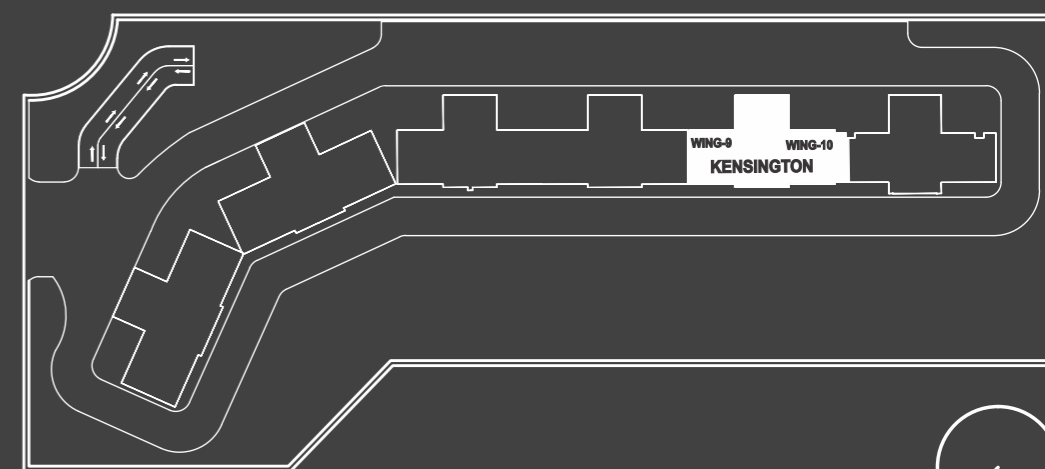
Super Area - 548 Sq. mtr./ 5900 Sq. ft.
 Built-up Area - 396.20 Sq. mtr./ 4265 Sq. ft.
 Carpet Area - 274 Sq. mtr./ 2948 Sq. ft.
 Balcony Area - 69.21 Sq. mtr./ 745 Sq. ft.
 Wing - 9 (Kensington Palace)
 Floors - 2, 6, 10, 15
 Wing: 10 (Kensington Palace)
 Floors - 4, 8, 12, 17

5 Bedrooms, 5 Toilets, 1 Powder Room, Living Room,
 Lounge & Dining Room, Family Lounge, Kitchen,
 Pantry, STR Room, STR Toilet, Balconies

UPPER FLOOR Villament 1A (5 BHK)

Super Area - 567 Sq. mtr./ 6100 Sq. ft.
 Built-up Area - 410.60 Sq. mtr./ 4420 Sq. ft.
 Carpet Area - 273 Sq. mtr./ 2941 Sq. ft.
 Balcony Area - 87.1 Sq. mtr./ 938 Sq. ft.
 Wing - 9 (Kensington Palace)
 Floors - 4, 8, 12, 17
 Wing: 10 (Kensington Palace)
 Floors - 6, 10, 15

5 Bedrooms, 5 Toilets, 1 Powder Room, Living Room,
 Lounge & Dining Room, Family Lounge, Kitchen,
 Pantry, STR Room, STR Toilet, Balconies

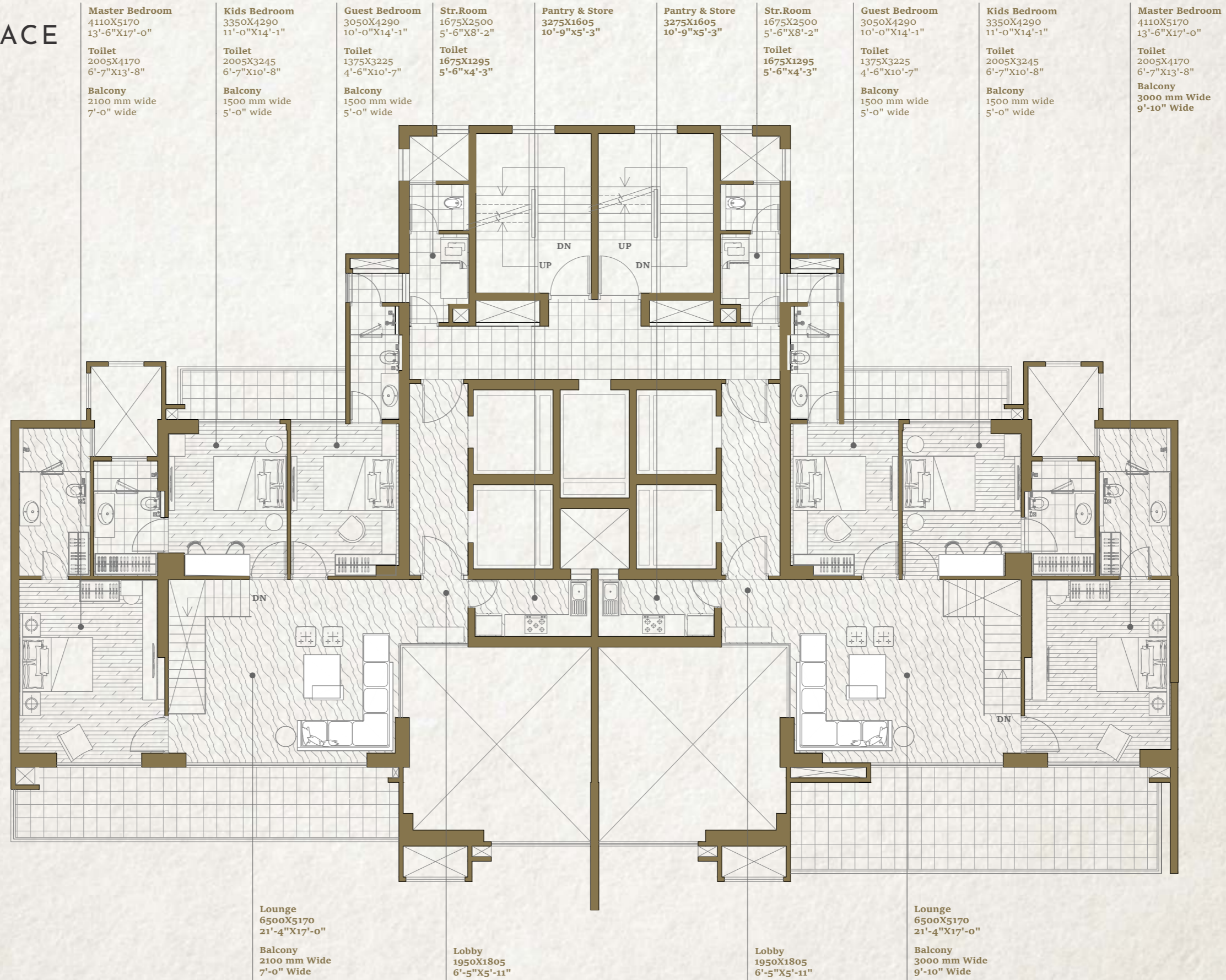


Key Plan

Disclaimer:

The depiction of images of layout and features as mentioned above are based on artistic impression. The customers are advised to check and re-verify the layout and features as mentioned from the website of RERA and/or from the office of the Developer. 1Sq mtr. = 10.764 sq. ft. The dimensions are from the unfinished walls (including skirting thickness). All Dimension are from the unfinished walls.

KENSINGTON PALACE



The depiction of images of layout and features as mentioned above are based on artistic impression. The customers are advised to check and re-verify the layout and features as mentioned from the website of RERA and/or from the office of the Developer. 1Sq mtr. = 10.764 sq. ft. The dimensions are from the unfinished walls (including skirting thickness).