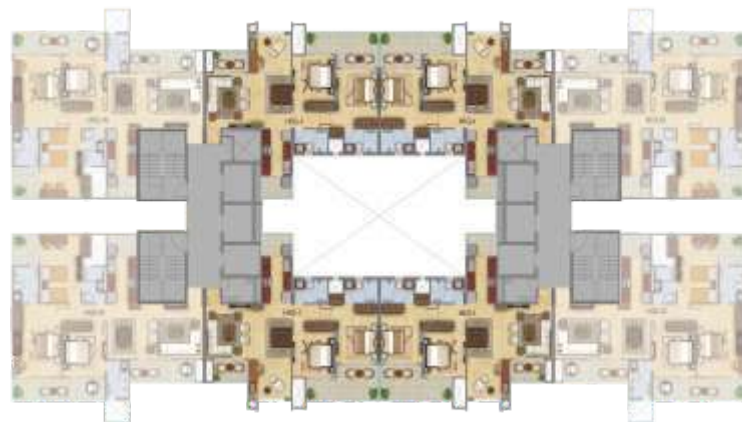


# HIG-I

## 2 BHK + Study (Typical Floor)

Super Area - 132 sq.m./ 1425 sq. ft.  
 Built-up Area - 105 sq.m./ 1130 sq.ft.  
 Carpet Area - 79 sq.m./ 852 sq.ft.  
 Balcony Area - 15.35 sq.m./ 165.30 sq.ft.

- 2 Bedrooms
- Study
- 2 Toilets
- Living Room
- Dining Room
- Kitchen with Utility
- Balconies



TYPE-2  
 Typical: 2, 3, 4, 6, 7, 8, 10, 11, 12, 14, 15, 16, 18, 19, 20, 22 Floor Plan

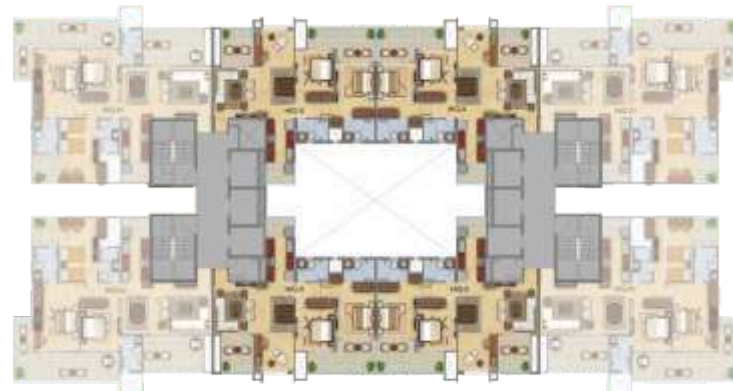
The depiction of images of layout and features as mentioned above are based on artistic impression. The customers are advised to check and re-verify the layout and features as mentioned from the website of RERA and/or from the office of the Developer. 1Sq mtr. = 10.764 sq. ft. The dimensions are from the unfinished walls (including skirting thickness).

# HIG-II

## 2 BHK + Study (Typical Floor)

Super Area - 136 sq. m./ 1465 sq. Ft.  
 Built-up Area - 109 sq.m./ 1175 sq.ft.  
 Carpet Area - 79 sq. m./ 852 sq. ft.  
 Balcony Area - 18.58 sq.m./ 200 sq. ft.

- 2 Bedrooms
- Study
- 2 Toilets
- Living Room
- Dining Room
- Kitchen with Utility
- Balconies



TYPE-1  
 Typical: 1, 5, 9, 13, 17, 21 Floor Plan

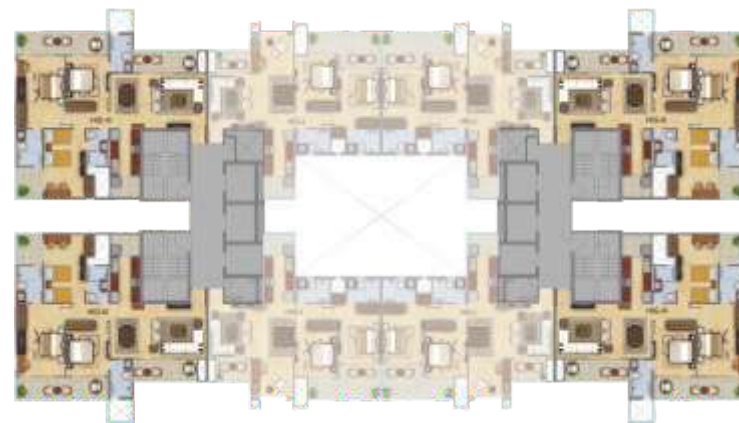
The depiction of images of layout and features as mentioned above are based on artistic impression. The customers are advised to check and re-verify the layout and features as mentioned from the website of RERA and/or from the office of the Developer. 1Sq mtr. = 10.764 sq. ft. The dimensions are from the unfinished walls (including skirting thickness).

# HIG-III

## 3 BHK (Typical Floor)

Super Area - 163 sq.m./ 1760 sq. ft.  
 Built-up Area - 136 sq.m./ 1470 sq.ft.  
 Carpet Area - 98 sq.m./ 1057 sq.ft.  
 Balcony Area - 22.57 sq.m./ 243 sq.ft.

- 3 Bedrooms
- 3 Toilets
- Living Room
- Dining Room
- Kitchen with Utility
- Balconies



TYPE-2  
 Typical: 2, 3, 4, 6, 7, 8, 10, 11, 12, 14, 15, 16, 18, 19, 20, 22 Floor Plan



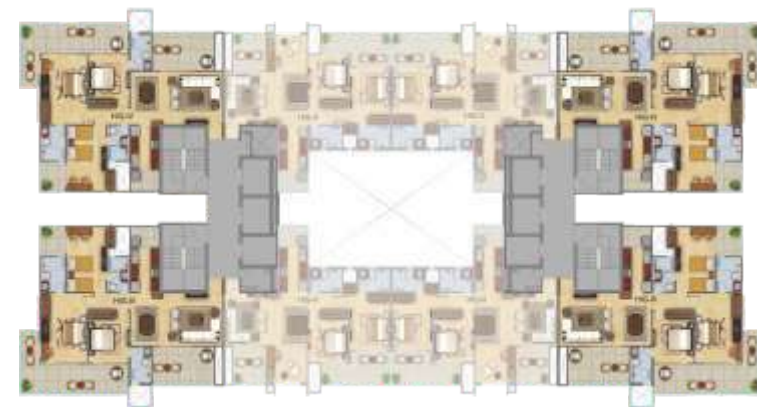
The depiction of images of layout and features as mentioned above are based on artistic impression. The customers are advised to check and re-verify the layout and features as mentioned from the website of RERA and/or from the office of the Developer. 1Sq mtr. = 10.764 sq. ft. The dimensions are from the unfinished walls (including skirting thickness).

# HIG-IV

## 3 BHK (Typical Floor)

Super Area - 181 sq. m./ 1945 sq. ft.  
 Built-up Area - 153 sq.m./ 1655 sq.ft.  
 Carpet Area - 98 sq.m./ 1057 sq.ft.  
 Balcony Area - 39.87 sq.m./ 429.20 sq.ft.

- 3 Bedrooms
- 3 Toilets
- Living Room
- Dining Room
- Kitchen with Utility
- Balconies



TYPE-1  
 Typical: 1, 5, 9, 13, 17, 21 Floor Plan



The depiction of images of layout and features as mentioned above are based on artistic impression. The customers are advised to check and re-verify the layout and features as mentioned from the website of RERA and/or from the office of the Developer. 1Sq mtr. = 10.764 sq. ft. The dimensions are from the unfinished walls (including skirting thickness).

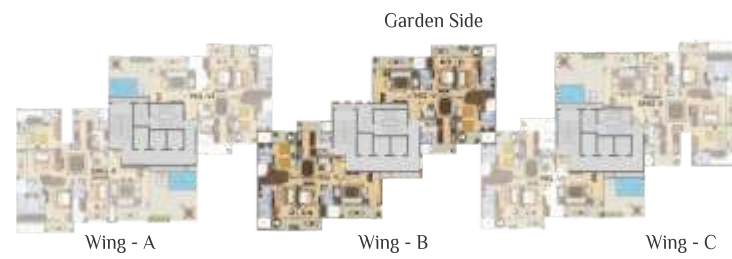
# HIG-V

## 3 BHK (Typical Floor)

Super Area - 222 sq.m./ 2385 sq.ft.  
 Built-up Area - 175 sq.m./ 1885 sq.ft.  
 Carpet Area - 134 sq.m./ 1445 sq.ft.  
 Balcony Area - 26.59 sq.m./ 286.30 sq.ft.



- 3 Bedrooms
- 3 Toilets
- Living Room
- Family/Dining Room
- Kitchen with Utility
- St. Room with Toilet
- Balconies



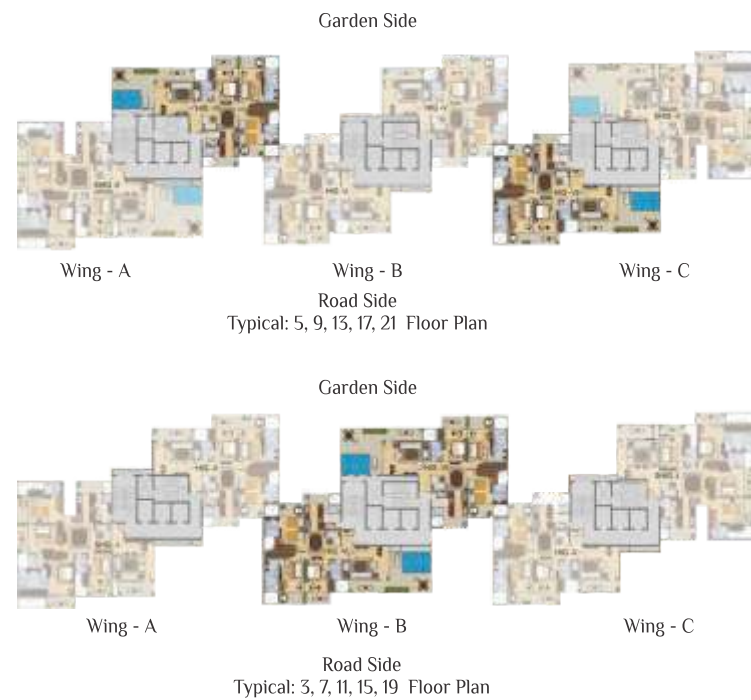
The depiction of images of layout and features as mentioned above are based on artistic impression. The customers are advised to check and re-verify the layout and features as mentioned from the website of RERA and/or from the office of the Developer. 1Sq mtr. = 10.764 sq. ft. The dimensions are from the unfinished walls (including skirting thickness).

# HIG-VI

## 3 BHK + Terrace (Typical Floor)

Super Area - 251 sq. m./ 2700 sq.ft.  
 Built-up Area - 204 sq.m./ 2200 sq.ft.  
 Carpet Area - 135 sq.m./ 1454 sq.ft.  
 Balcony Area - 26.73 sq.m./ 287.80 sq.ft.  
 Open Terrace - 26.19 sq.m./ 282.01 sq.ft.

- 3 Bedrooms
- 3 Toilets
- Living Room
- Family / Dining Room
- Kitchen with Utility
- St. Room with Toilet
- Balconies
- Terrace



The depiction of images of layout and features as mentioned above are based on artistic impression. The customers are advised to check and re-verify the layout and features as mentioned from the website of RERA and/or from the office of the Developer. 1Sq mtr. = 10.764 sq. ft. The dimensions are from the unfinished walls (including skirting thickness).

# SHIG-I

## 4 BHK (Typical Floor)

Super Area - 274 sq.m./ 2950 sq.ft.  
 Built-up Area - 227 sq.m./ 2450 sq.ft.  
 Carpet Area - 176 sq.m./ 1899 sq.ft.  
 Balconey Area - 37.50 sq.m./ 403.70 sq.ft.

- 4 Bedrooms
- 4 Toilets
- Living Room
- Family / Dining Room
- Kitchen with Utility
- St. Room with Toilet
- Balconies



The depiction of images of layout and features as mentioned above are based on artistic impression. The customers are advised to check and re-verify the layout and features as mentioned from the website of RERA and/or from the office of the Developer. 1Sq mtr. = 10.764 sq. ft. The dimensions are from the unfinished walls (including skirting thickness).

# SHIG-II

## 4 BHK + Terrace (Typical Floor)

Super Area - 316 sq. m./ 3400 sq.ft.  
 Built-up Area - 269 sq.m./ 2900 sq.ft.  
 Carpet Area - 177 sq.m./ 1910 sq.ft.  
 Balcony Area - 37.68 sq.m./ 405.65 sq.ft.  
 Open Terrace - 39.11 sq.m./ 421.08 sq.ft.

- 4 Bedrooms
- 4 Toilets
- Living Room
- Family / Dining Room
- Kitchen with Utility
- St. Room with Toilet
- Balconies
- Terrace



The depiction of images of layout and features as mentioned above are based on artistic impression. The customers are advised to check and re-verify the layout and features as mentioned from the website of RERA and/or from the office of the Developer. 1Sq mtr. = 10.764 sq. ft. The dimensions are from the unfinished walls (including skirting thickness).